



# Application Note

## BRT\_AN\_049

# Bridgetek Tape, Reel and Tray Dimensions

**Version 1.1**

**Issue Date: 18-11-2020**

This document provides information on the tape, reel and tray dimensions for FT800Q, FT801Q, FT810Q, FT811Q, FT812Q, FT813Q, BT815Q, BT816Q, BT817Q, BT818Q, FT900Q, FT901Q, FT902Q, FT903Q, FT905Q, FT906Q, FT907Q, FT908Q, FT900L, FT901L, FT902L, FT903L, FT905L, FT906L, FT907L and FT908L.

Use of Bridgetek devices in life support and/or safety applications is entirely at the user's risk, and the user agrees to defend, indemnify and hold Bridgetek harmless from any and all damages, claims, suits or expense resulting from such use.

**Bridgetek Pte Ltd (BRTChip)**  
178 Paya Lebar Road, #07-03, Singapore 409030  
Tel: +65 6547 4827 Fax: +65 6841 6071  
Web Site: <http://www.brtchip.com>  
Copyright © Bridgetek Pte Ltd

## **Table of Contents**

<b>1</b>	<b>Introduction .....</b>	<b>4</b>
<b>2</b>	<b>Packaging Options .....</b>	<b>5</b>
	Tape and Reel Packaging .....	5
	Tray Packaging .....	5
<b>3</b>	<b>FT800Q, FT801Q Reel Dimensions .....</b>	<b>6</b>
<b>4</b>	<b>FT800Q, FT801Q Tape Dimensions .....</b>	<b>7</b>
<b>5</b>	<b>FT800Q, FT801Q Tray Dimensions .....</b>	<b>8</b>
<b>6</b>	<b>FT810Q, FT811Q, FT932Q, FT933Q Reel Dimensions</b>	<b>10</b>
<b>7</b>	<b>FT810Q, FT811Q, FT932Q, FT933Q Tape Dimensions</b>	<b>11</b>
<b>8</b>	<b>FT810Q, FT811Q, FT932Q, FT933Q Tray Dimensions</b>	<b>12</b>
<b>9</b>	<b>FT812Q, FT813Q, FT930Q, FT931Q Reel Dimensions</b>	<b>14</b>
<b>10</b>	<b>FT812Q, FT813Q, FT930Q, FT931Q Tape Dimensions</b>	<b>15</b>
<b>11</b>	<b>FT812Q, FT813Q, FT930Q, FT931Q Tray Dimensions</b>	<b>16</b>
<b>12</b>	<b>BT815Q, BT816Q, FT905Q, FT906Q, FT907Q, FT908Q Reel Dimensions .....</b>	<b>17</b>
<b>13</b>	<b>BT815Q, BT816Q, FT905Q, FT906Q, FT907Q, FT908Q Tape Dimensions.....</b>	<b>18</b>
<b>14</b>	<b>BT815Q, BT816Q, FT905Q, FT906Q, FT907Q, FT908Q Tray Dimensions .....</b>	<b>19</b>
<b>15</b>	<b>BT817Q, BT818Q, Reel Dimensions .....</b>	<b>21</b>
<b>16</b>	<b>BT817Q, BT818Q Tape Dimensions.....</b>	<b>22</b>
<b>17</b>	<b>BT817Q, BT818Q, Tray Dimensions .....</b>	<b>23</b>

<b>18</b>	<b>FT900Q, FT901Q, FT902Q, FT903Q Reel Dimensions</b>	<b>25</b>
<b>19</b>	<b>FT900Q, FT901Q, FT902Q, FT903Q Tape Dimensions</b>	<b>26</b>
<b>20</b>	<b>FT900Q, FT901Q, FT902Q, FT903Q Tray Dimensions</b>	<b>27</b>
<b>21</b>	<b>FT900L, FT901L, FT902L, FT903L Reel Dimensions</b>	<b>29</b>
<b>22</b>	<b>FT900L, FT901L, FT902L, FT903L Tape Dimensions</b>	<b>30</b>
<b>23</b>	<b>FT900L, FT901L, FT902L, FT903L Tray Dimensions</b>	<b>31</b>
<b>24</b>	<b>FT905L, FT906L, FT907L, FT908L Reel Dimensions</b>	<b>32</b>
<b>25</b>	<b>FT900L, FT901L, FT902L, FT903L Tape Dimensions</b>	<b>33</b>
<b>26</b>	<b>FT900L, FT901L, FT902L, FT903L Tray Dimensions</b>	<b>34</b>
<b>27</b>	<b>Contact Information .....</b>	<b>35</b>
<b>Appendix A– References .....</b>		<b>36</b>
	Document References .....	36
	Acronyms and Abbreviations.....	36
<b>Appendix B – List of Tables &amp; Figures .....</b>		<b>37</b>
	List of Tables.....	37
	List of Figures .....	37
<b>Appendix C– Revision History .....</b>		<b>38</b>

## 1 Introduction

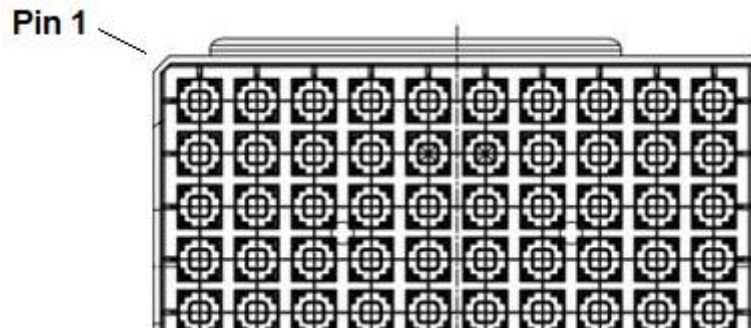
This document provides information on the tape, reel and tray dimensions for FT800Q, FT801Q, FT810Q, FT811Q, FT812Q, FT813Q, BT815Q, BT816Q, BT817Q, BT818Q, FT900Q, FT901Q, FT902Q, FT903Q, FT905Q, FT906Q, FT907Q, FT908Q, FT900L, FT901L, FT902L, FT903L, FT905L, FT906L, FT907L and FT908L.

**Note:** For tape and reel packaging, pin 1 location is identified as the small circle within the package as shown in Figure 1.1.



**Figure 1.1 Tape and Reel Pin1 Identifier**

**Note:** For tray packaging, pin 1 location is identified as the 45 degree chamfer as shown in Figure 1.2.



**Figure 1.2 Tray Pin1 Identifier**

## 2 Packaging Options

Bridgetek can supply devices packaged in tape and reel packaging or in trays. The quantities in each package type are described in Table 2.1 and Table 2.2.

### Tape and Reel Packaging

IC – Tape and Reel	Package	Quantities (pieces)
FT800Q, FT801Q -R	QFN 48	3000
FT810Q, FT811Q -R	QFN 48	3000
FT812Q, FT813Q -R	QFN 56	3000
BT815Q, BT816Q -R	QFN 64	3000
BT817Q, BT818Q -R	QFN 64	3000
FT900Q, FT901Q, FT902Q, FT903Q -R	QFN 100	1000
FT900L, FT901L, FT902L, FT903L -R	QFP 100	1000
FT905Q, FT906Q, FT907Q, FT908Q -R	QFN 76	3000
FT905L, FT906L, FT907L, FT908L -R	QFP 80	1000
FT930Q -R	QFN 68	3000
FT931Q -R	QFN 56	3000
FT932Q, FT933Q -R	QFN 48	3000

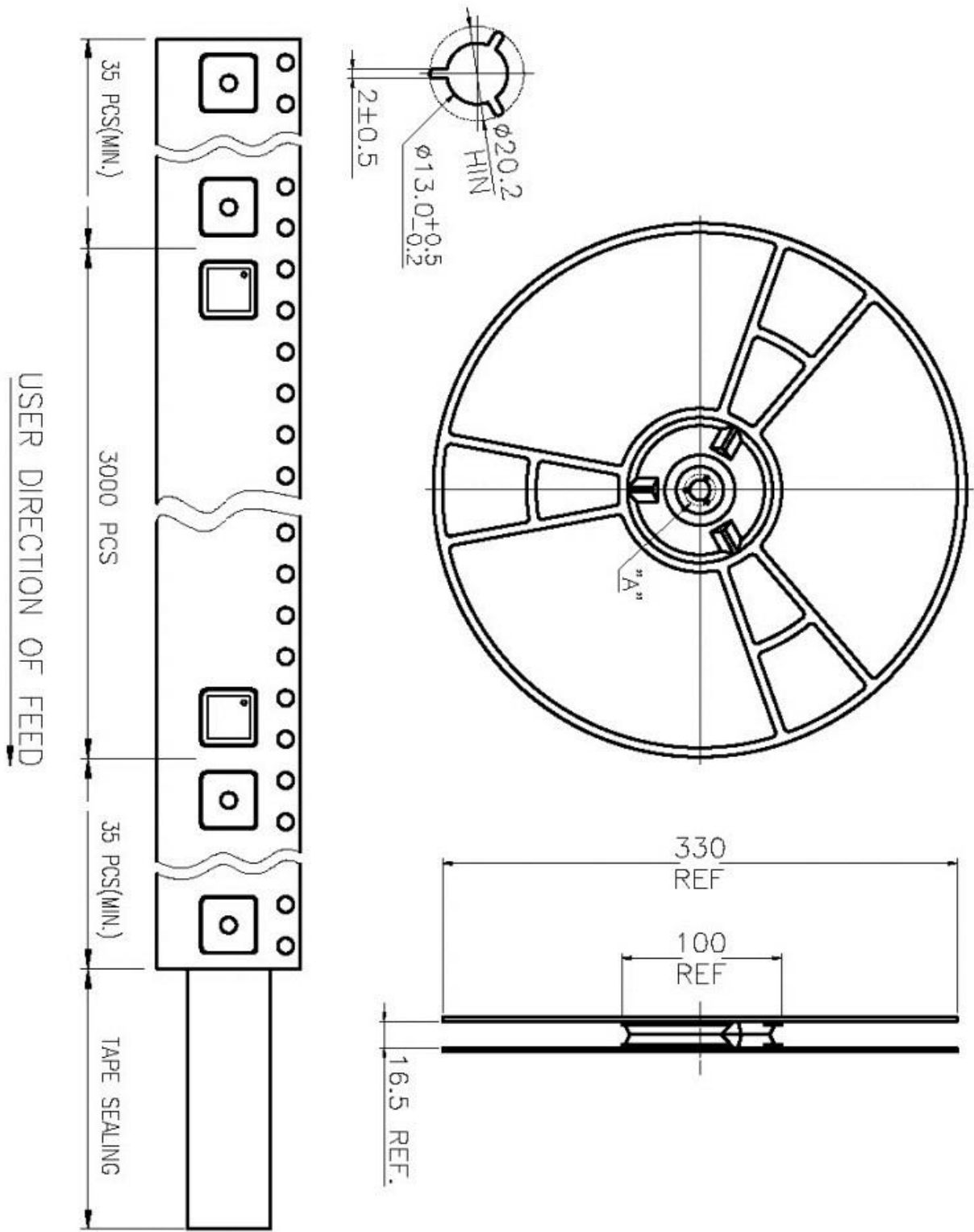
**Table 2.1 – Tape and Reel Quantities**

### Tray Packaging

IC – Tray	Package	Quantities (pieces)
FT800Q, FT801Q -R	QFN 48	260
FT810Q, FT811Q -R	QFN 48	260
FT812Q, FT813Q -R	QFN 56	348
BT815Q, BT816Q -R	QFN 64	260
BT817Q, BT818Q -R	QFN 64	260
FT900Q, FT901Q, FT902Q, FT903Q -R	QFN 100	152
FT900L, FT901L, FT902L, FT903L -R	QFP 100	90
FT905Q, FT906Q, FT907Q, FT908Q -R	QFN 76	260
FT905L, FT906L, FT907L, FT908L -R	QFP 80	160
FT930Q -R	QFN 68	348
FT931Q -R	QFN 56	348
FT932Q, FT933Q -R	QFN 48	250

**Table 2.2 – Tray Quantities**

### 3 FT800Q, FT801Q Reel Dimensions

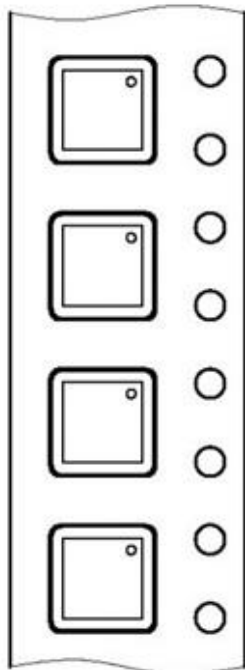
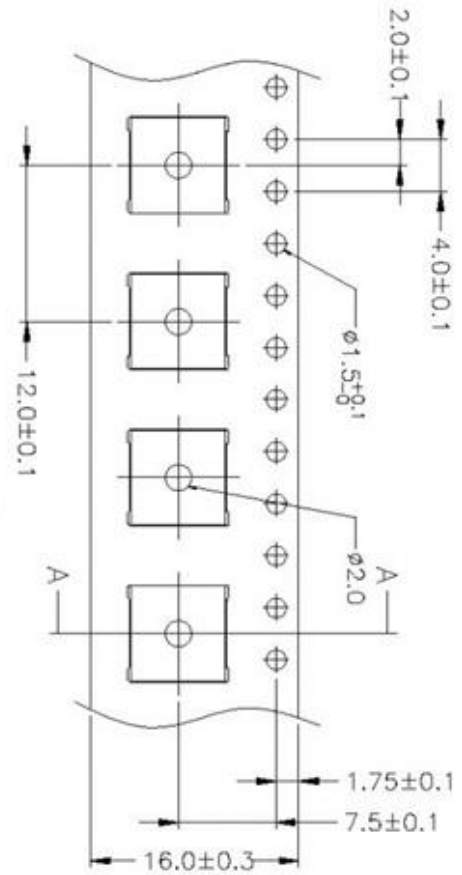
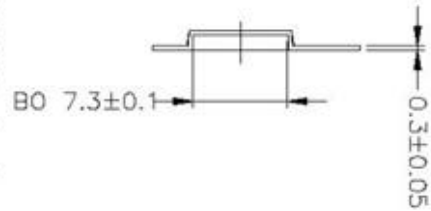


**Figure 3.1 FT800Q, FT801Q Reel Dimensions**

## 4 FT800Q, FT801Q Tape Dimensions

- NOTES:
1. DIM IN MM.
  2. 10 SPROCKET HOLE PITCH CUMULATIVE TOLERANCE  $\pm 0.2$ .
  3. CAMBER NOT TO EXCEED 1 MM IN 100 MM.
  4. POCKET POSITION RELATIVE TO SPROCKET HOLE MEASURED AS TRUE POSITION OF POCKET, NOT POCKET HOLE.
  5. SURFACE RESISTIVITY LESS THAN OR EQUAL TO  $1.0 \times 10^7$  OHMS/SQ.

SECTION A-A



QFN (7X7)  
 3000 EA/PER REEL

Figure 4.1 FT800Q, FT801Q Tape Dimensions

## 5 FT800Q, FT801Q Tray Dimensions

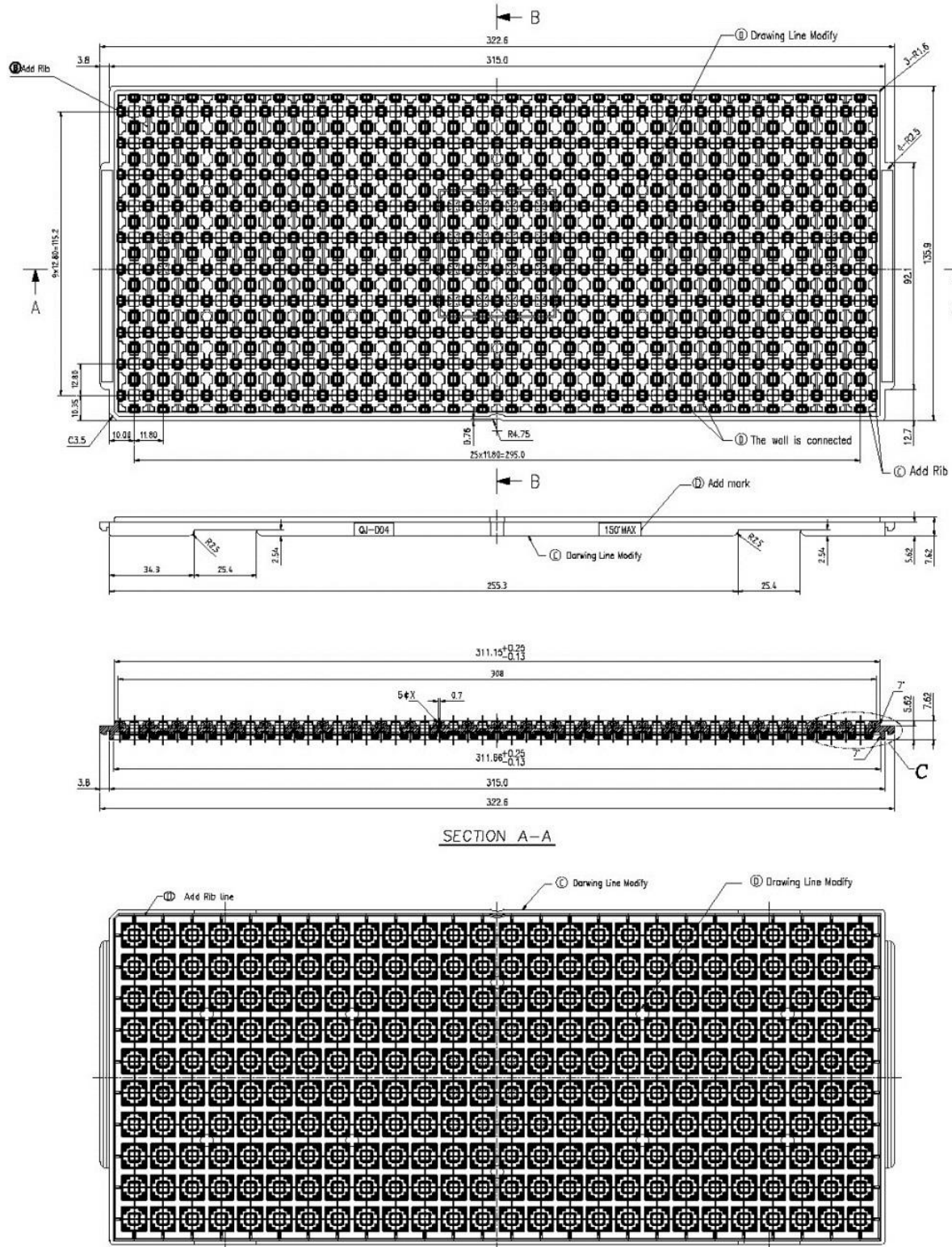
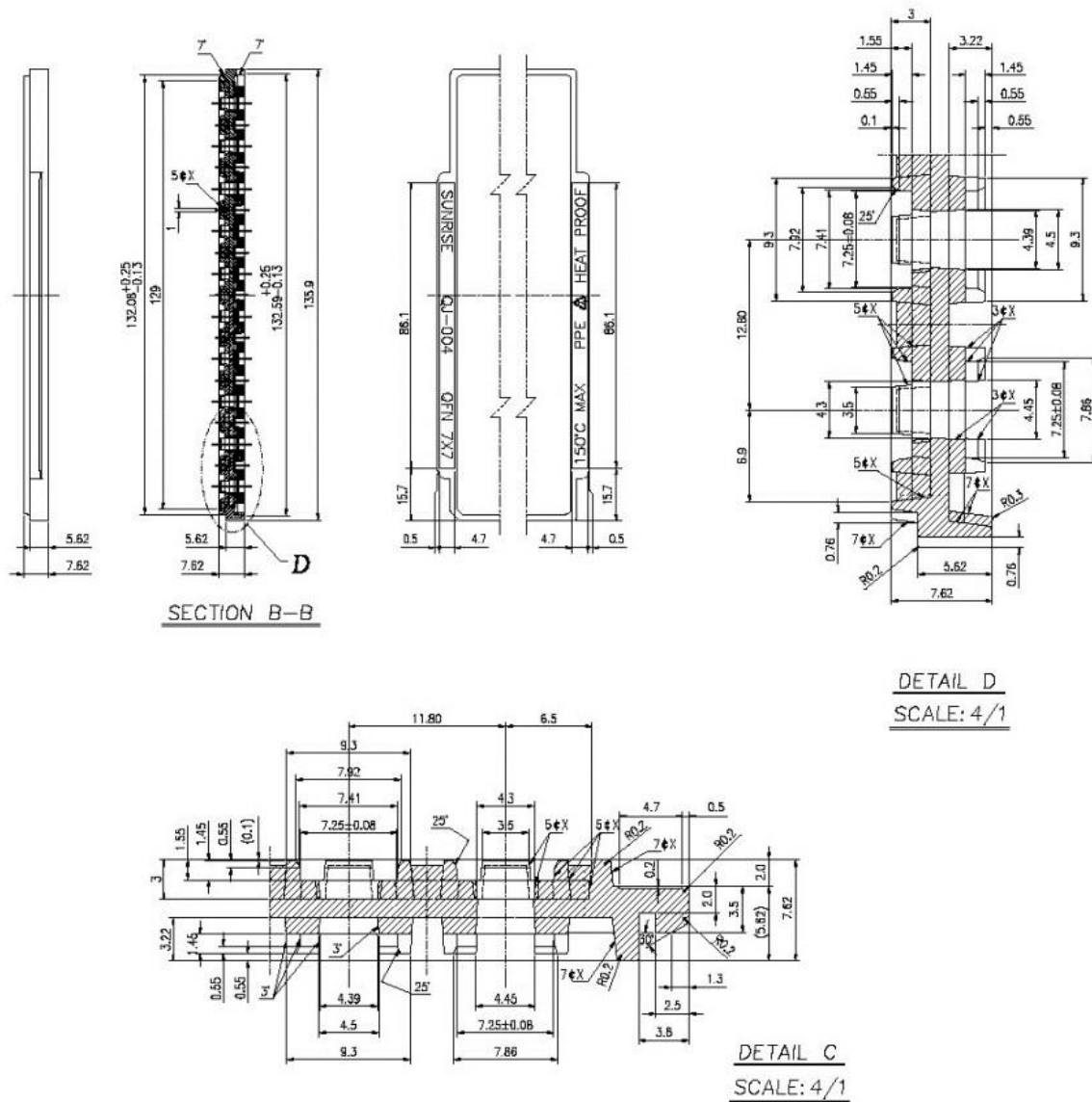


Figure 5.1 FT800Q, FT801Q Tray Dimensions



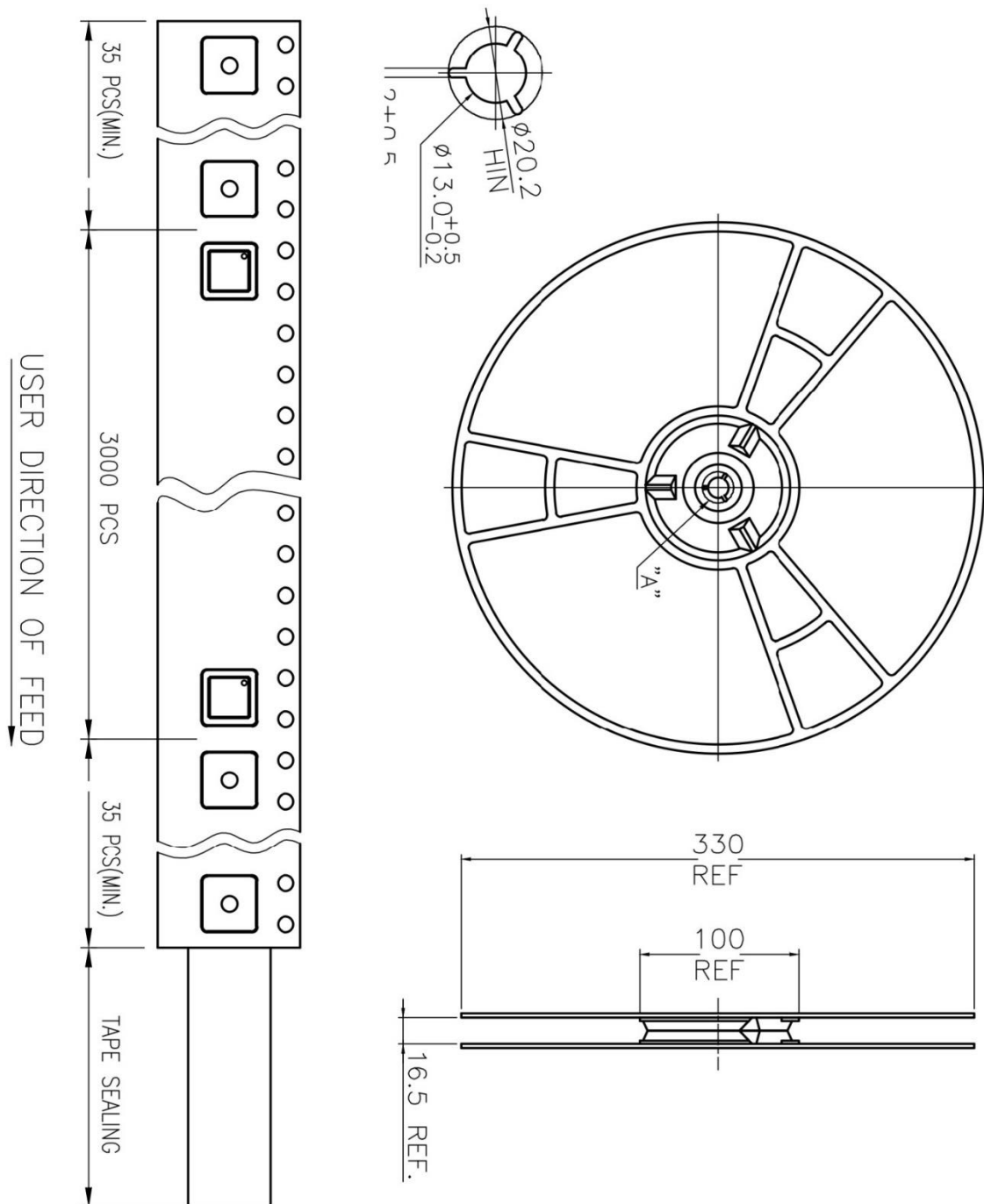


**NOTE :**

1. HEAT RESISTANCE UP TO 24 HOURS 150°C.
2. SURFACE ELECTRIC RESISTIVITY LESS THAN  $10^{12} \Omega/\text{sq}$
3. WARPAGE IS WITHIN 0.76mm.
4. TOLERANCE : X=±0.5mm  
               X.X=±0.25mm  
               X.XX=±0.13mm
5. Material : PPE+Carbon Fiber

**Figure 5.2 FT800Q, FT801Q Tray Dimensions**

## 6 FT810Q, FT811Q, FT932Q, FT933Q Reel Dimensions

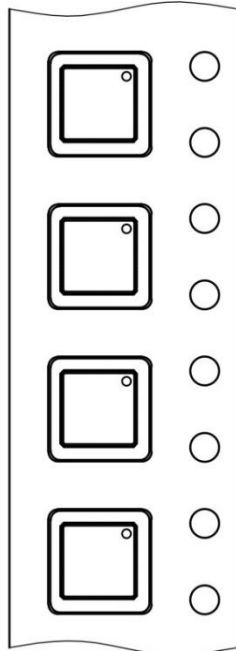
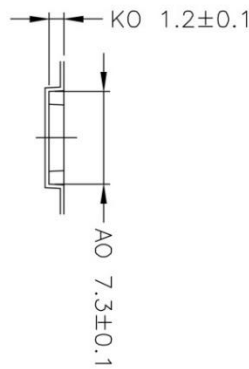
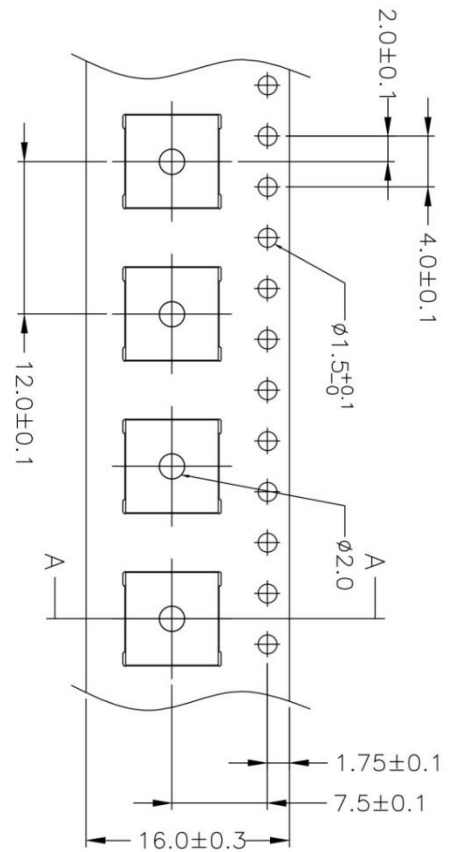
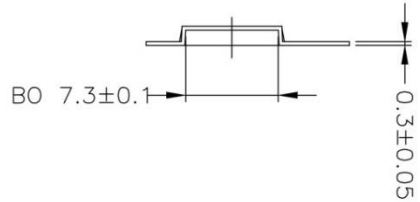


**Figure 6.1 FT810Q, FT811Q, FT932Q, FT933Q Reel Dimensions**

## 7 FT810Q, FT811Q, FT932Q, FT933Q Tape Dimensions

- NOTES:
1. DIM IN MM.
  2. 10 SPROCKET HOLE PITCH CUMULATIVE TOLERANCE  $\pm 0.2$ .
  3. CAMBER NOT TO EXCEED 1 MM IN 100 MM.
  4. POCKET POSITION RELATIVE TO SPROCKET HOLE MEASURED AS TRUE POSITION OF POCKET, NOT POCKET HOLE.
  5. SURFACE RESISTIVITY LESS THAN OR EQUAL TO  $1.0 \times 10^7$  OHMS/SQ.

SECTION A-A



**Figure 7.1 FT810Q, FT811Q, FT932Q, FT933Q Tape Dimensions**

## 8 FT810Q, FT811Q, FT932Q, FT933Q Tray Dimensions

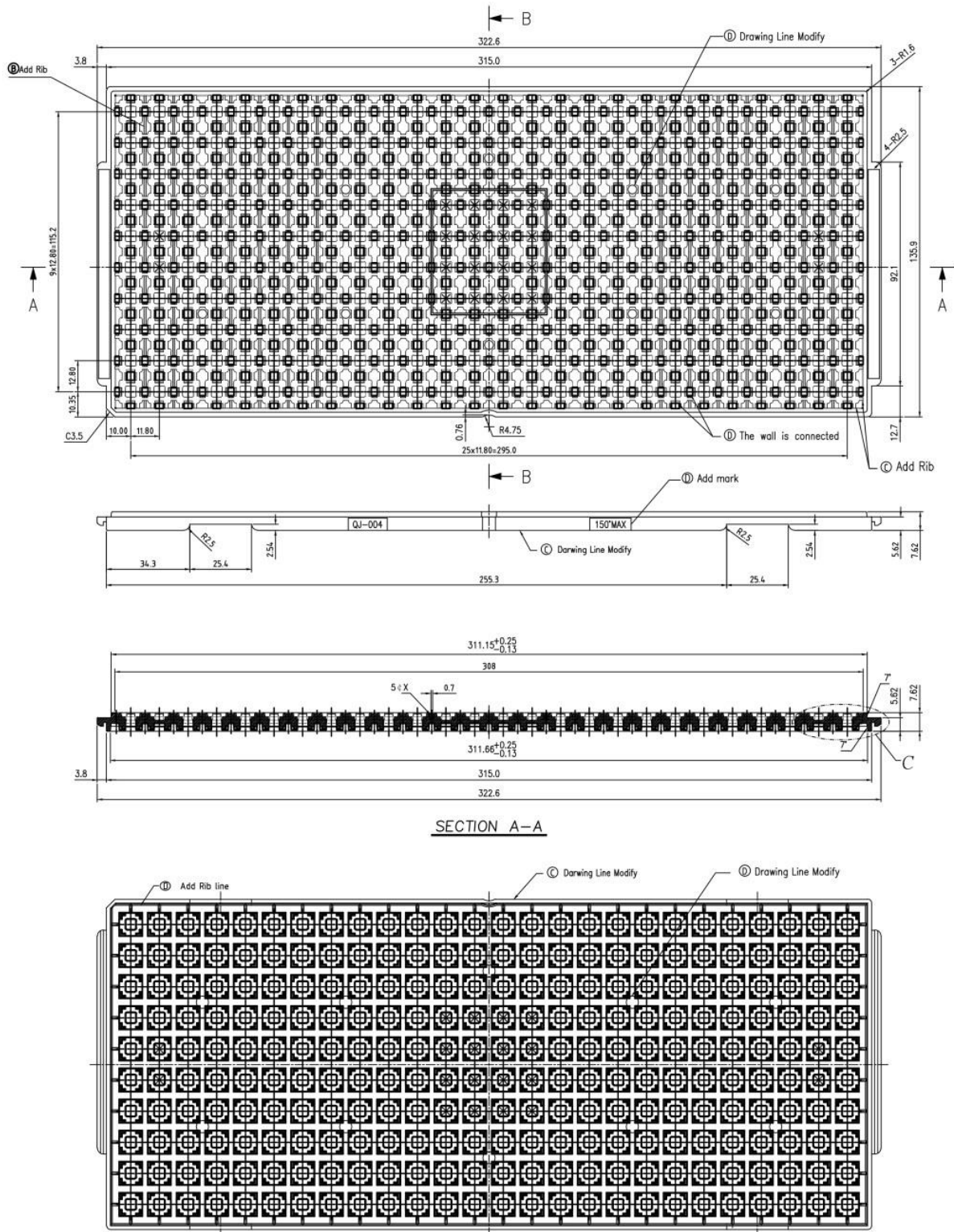
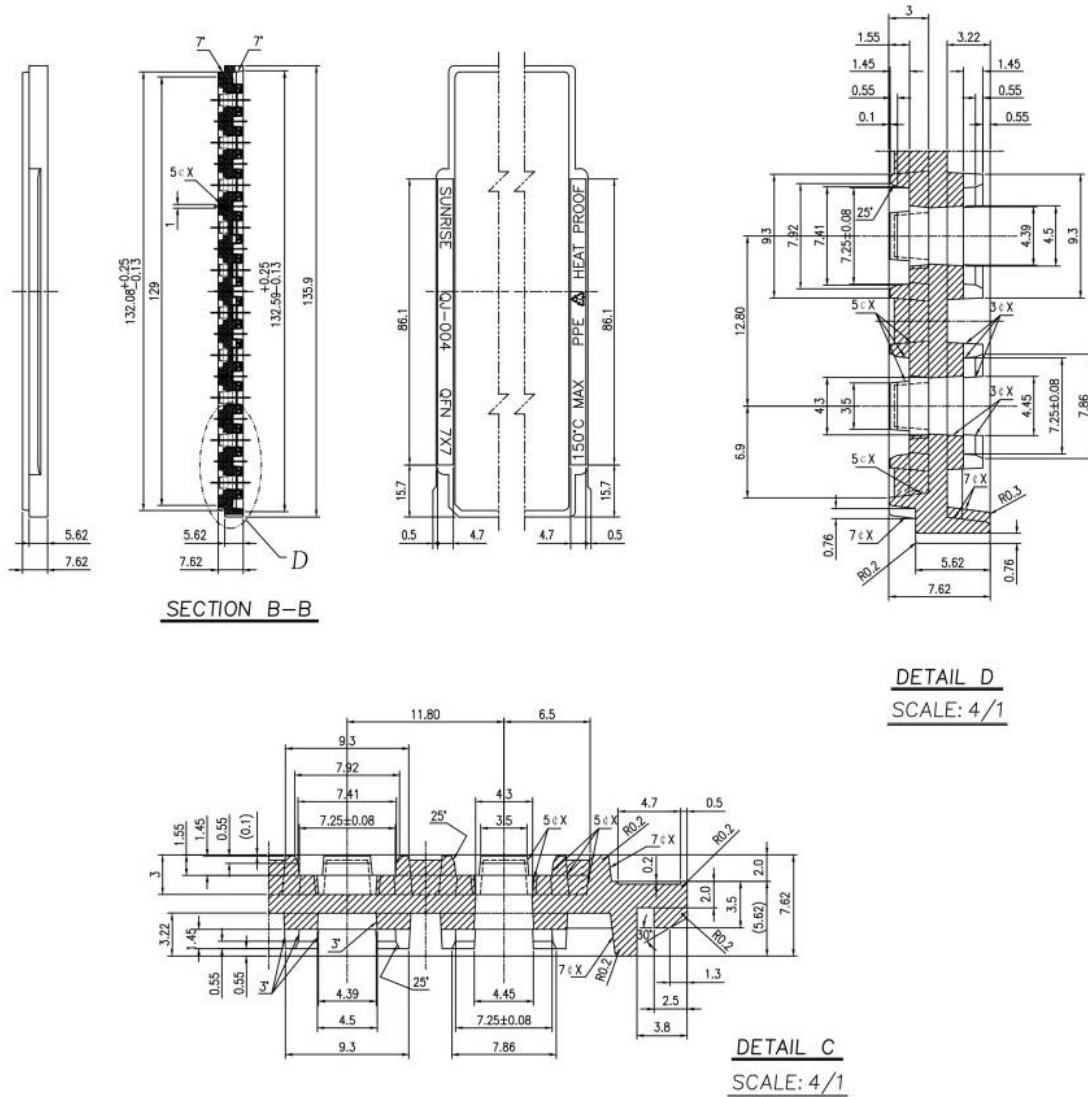


Figure 8.1 FT810Q, FT811Q, FT932Q, FT933Q Tray Dimensions

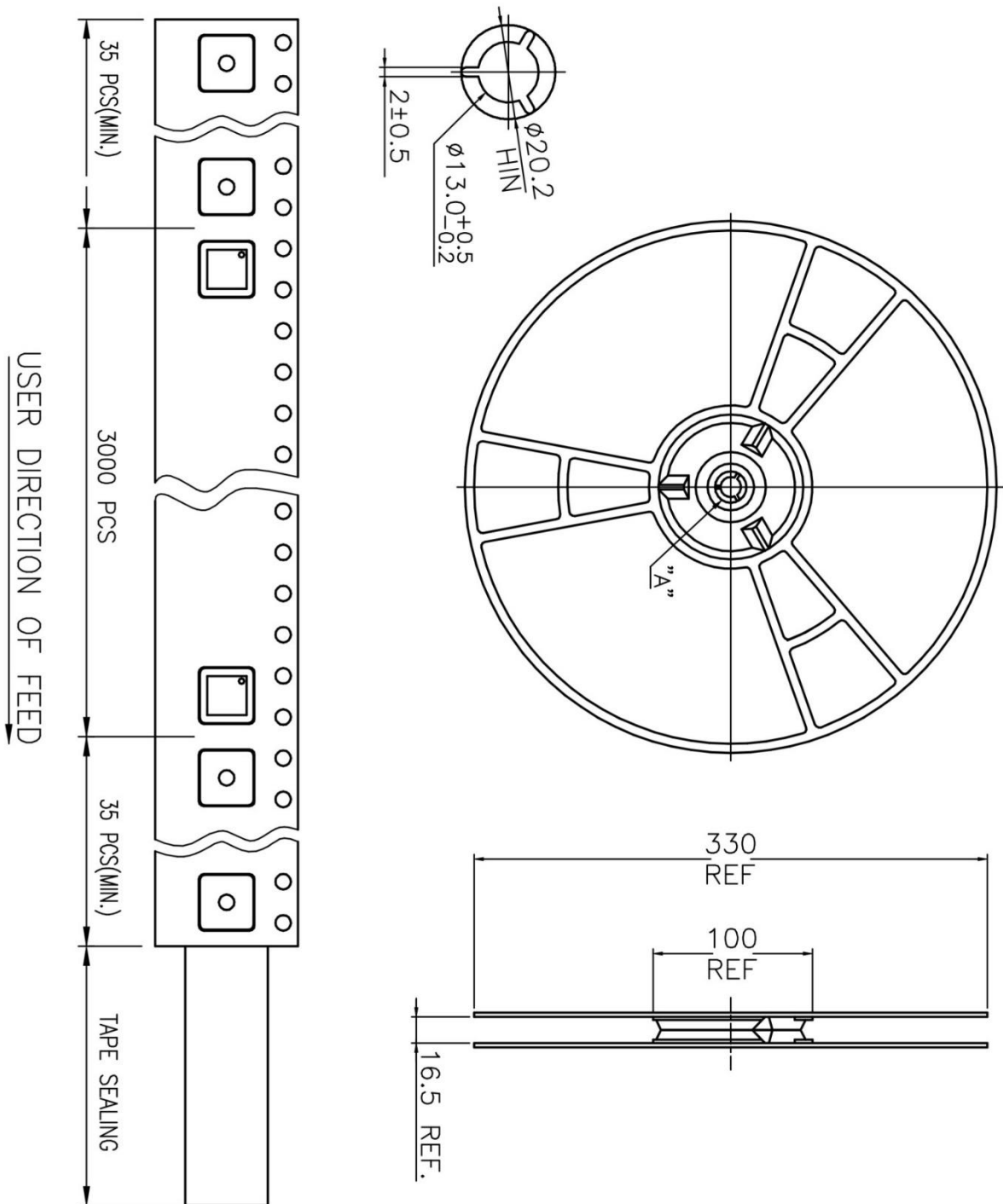


NOTE :

1. HEAT RESISTANCE UP TO 24 HOURS 150°C.
2. SURFACE ELECTRIC RESISTIVITY LESS THAN  $10^{12} \Omega/\text{sq}$
3. WARPAGE IS WITHIN 0.76mm.
4. TOLERANCE : X=±0.5mm  
                   X.X=±0.25mm  
                   X.XX=±0.13mm
5. Material : PPE+Carbon Fiber

**Figure 8.2 FT810Q, FT811Q, FT932Q, FT933Q Tray Dimensions**

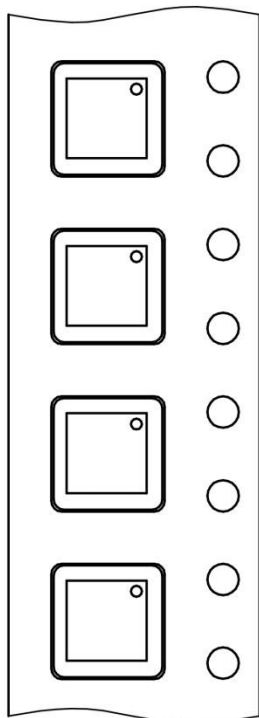
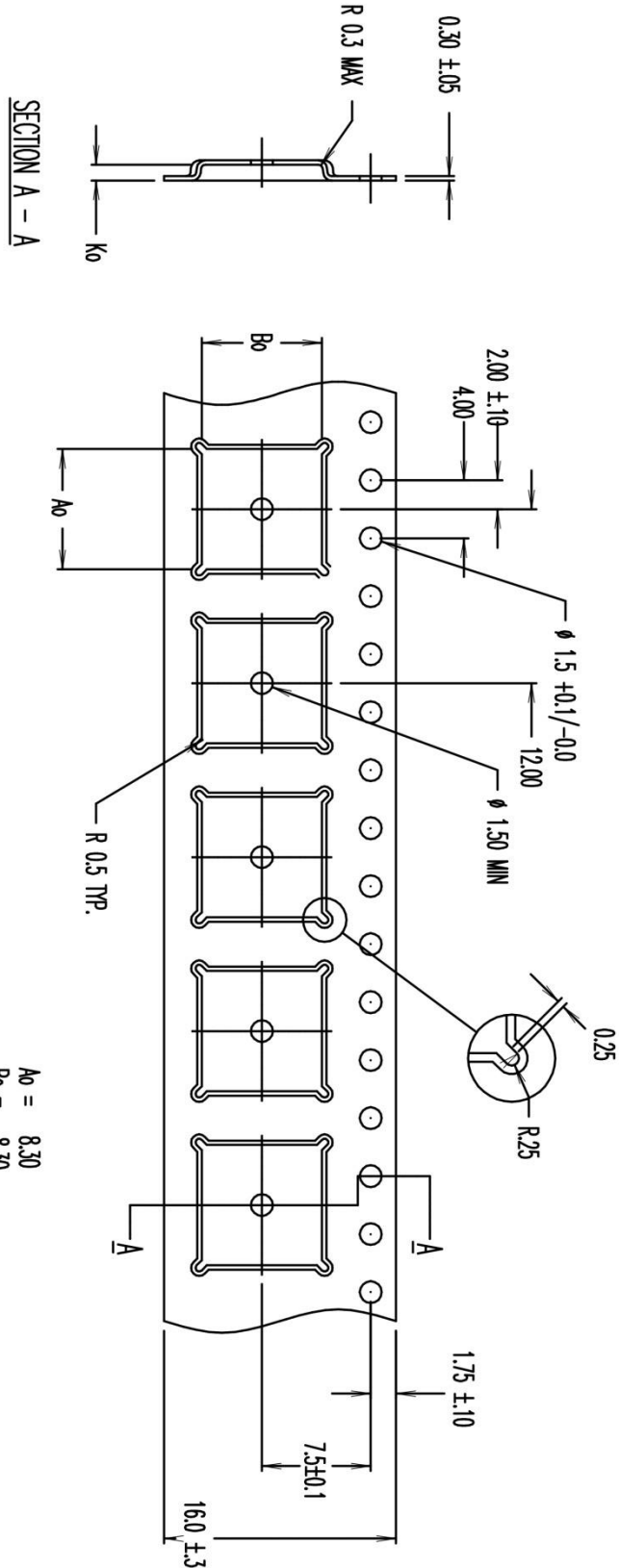
## 9 FT812Q, FT813Q, FT930Q, FT931Q Reel Dimensions



**Figure 9.1 FT812Q, FT813Q, FT930Q, FT931Q Reel Dimensions**

## 10 FT812Q, FT813Q, FT930Q, FT931Q Tape Dimensions

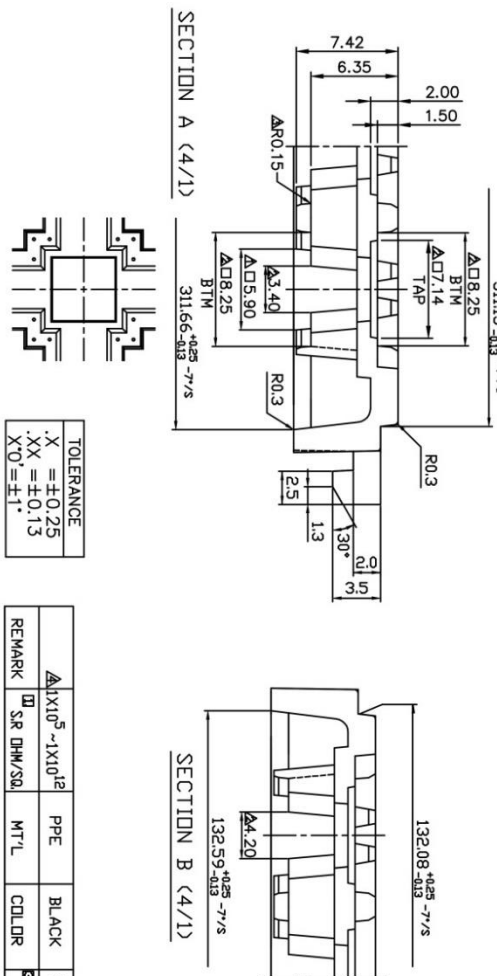
- Notes:
1. 10 sprocket hole pitch cumulative tolerance  $\pm 0.2$
  2. Camber not to exceed 1mm in 100mm.
  3. Material: Black Advantek Polystyrene.
  4.  $A_0$  and  $B_0$  measured on a plane 0.3mm above the bottom of the pocket.
  5.  $K_0$  measured from a plane on the inside bottom of the pocket to the top surface of the carrier.
  6. Pocket position relative to sprocket hole measured as true position of pocket, not pocket hole.



**Figure 10.1 FT812Q, FT813Q, FT930Q, FT931Q Tape Dimensions**

# 11 FT812Q, FT813Q, FT930Q, FT931Q Tray Dimensions

- NOTES :
1. (SR, DHM/SD) MEANS SURFACE ELECTRIC RESISTIVITY OF THE TRAY.
  2. THE MOLDED TRAY'S MATERIAL SHALL BE RIGID ENOUGH TO AVOID DAMAGE TO THE COMPONENTS DURING HANDLING, LOADING, BACKING, TESTING, SHIPPING AND PLACING.
  3. TEMP °C IS THE MAXIMUM OPERATING TEMPERATURE THE EMPTY TRAY CAN BE SUBJECTED TO FOR 48 CONTINUOUS HOURS BAKING WITHOUT VOIDING THE DIMENSIONAL TOLERANCE OF THE TRAY.
  4. TRAYS ARE STACKABLE WITHOUT INTERFERENCE AND WILL NOT STICK TOGETHER DURING UNSTACKING OPERATION.
  5. WARRPAGE IS WITHIN 0.76 mm.
  6. THE CELLS MARKED WITH CROSS SYMBOL ARE FOR VACUUM PICKUP AREA.
  7. TOTAL USABLE CELLS 12X29=348.
  8. THE TRAY MEETS JEDEC STANDARD.



TOLERANCE	
.X	= ±0.25
.XX	= ±0.13
XO	= ±1°

REMARK	Δ1X10 <sup>5</sup> -1X10 <sup>12</sup>	SR DHM/SD	MTL	COLDR	TEMP °C	PART MDL
					150°C MAX.	EA70808-10

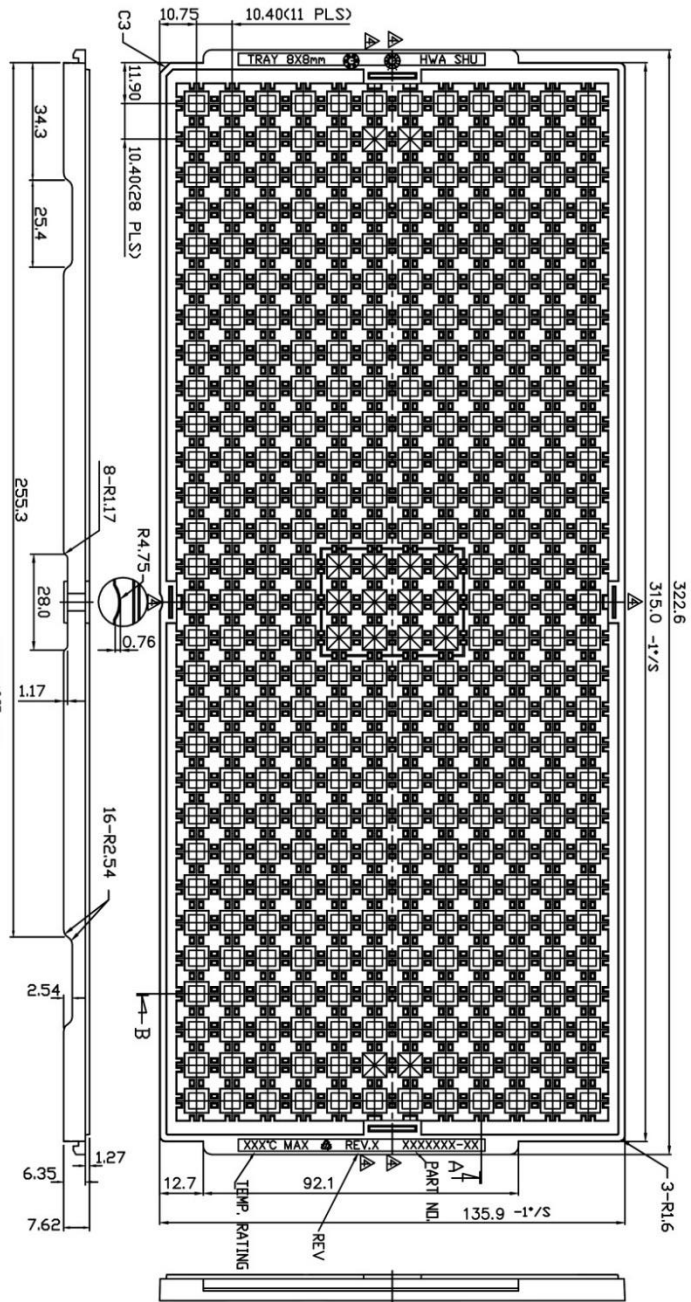
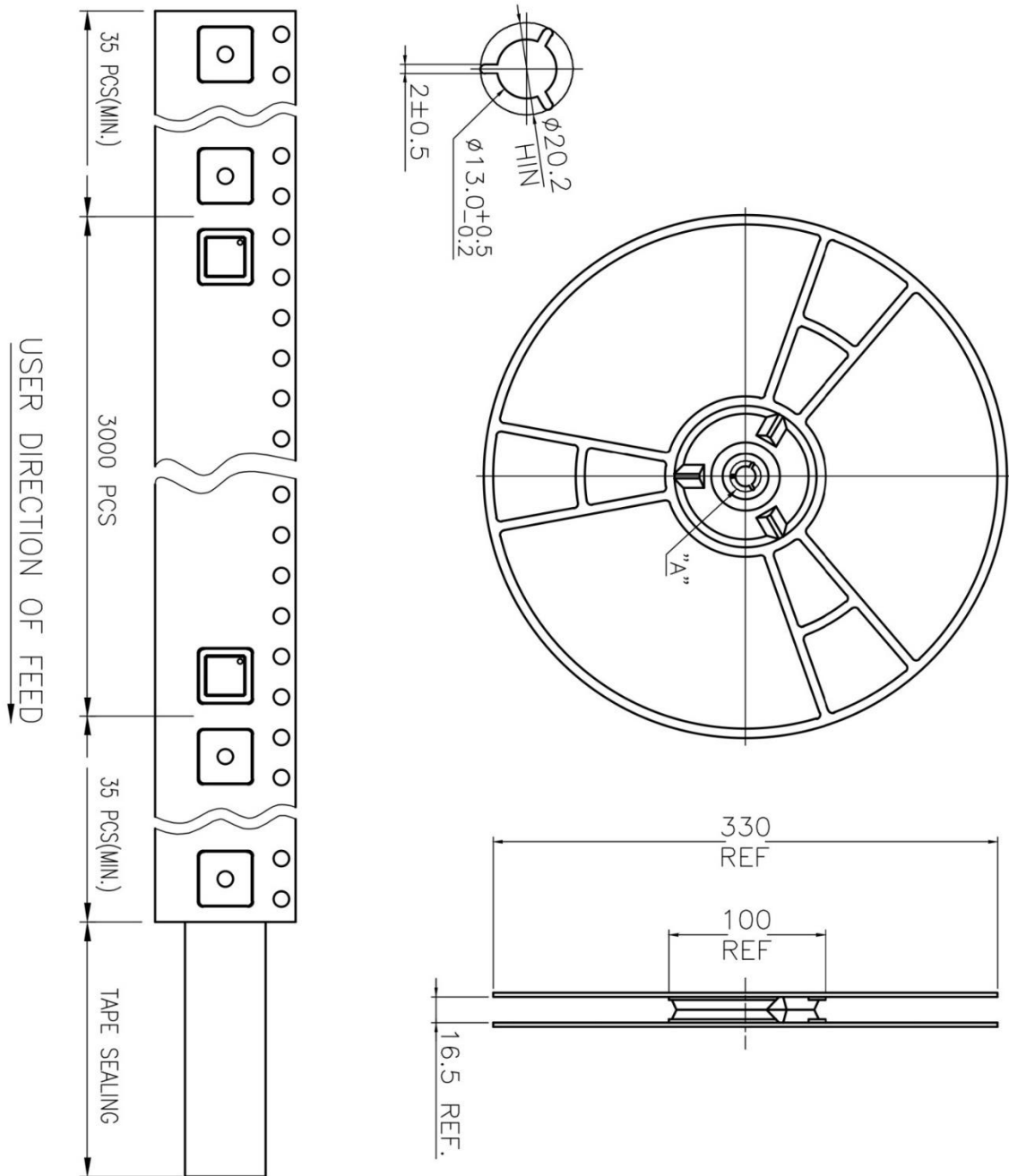


Figure 11.1 FT812Q, FT813Q, FT930Q, FT931Q Tray Dimensions



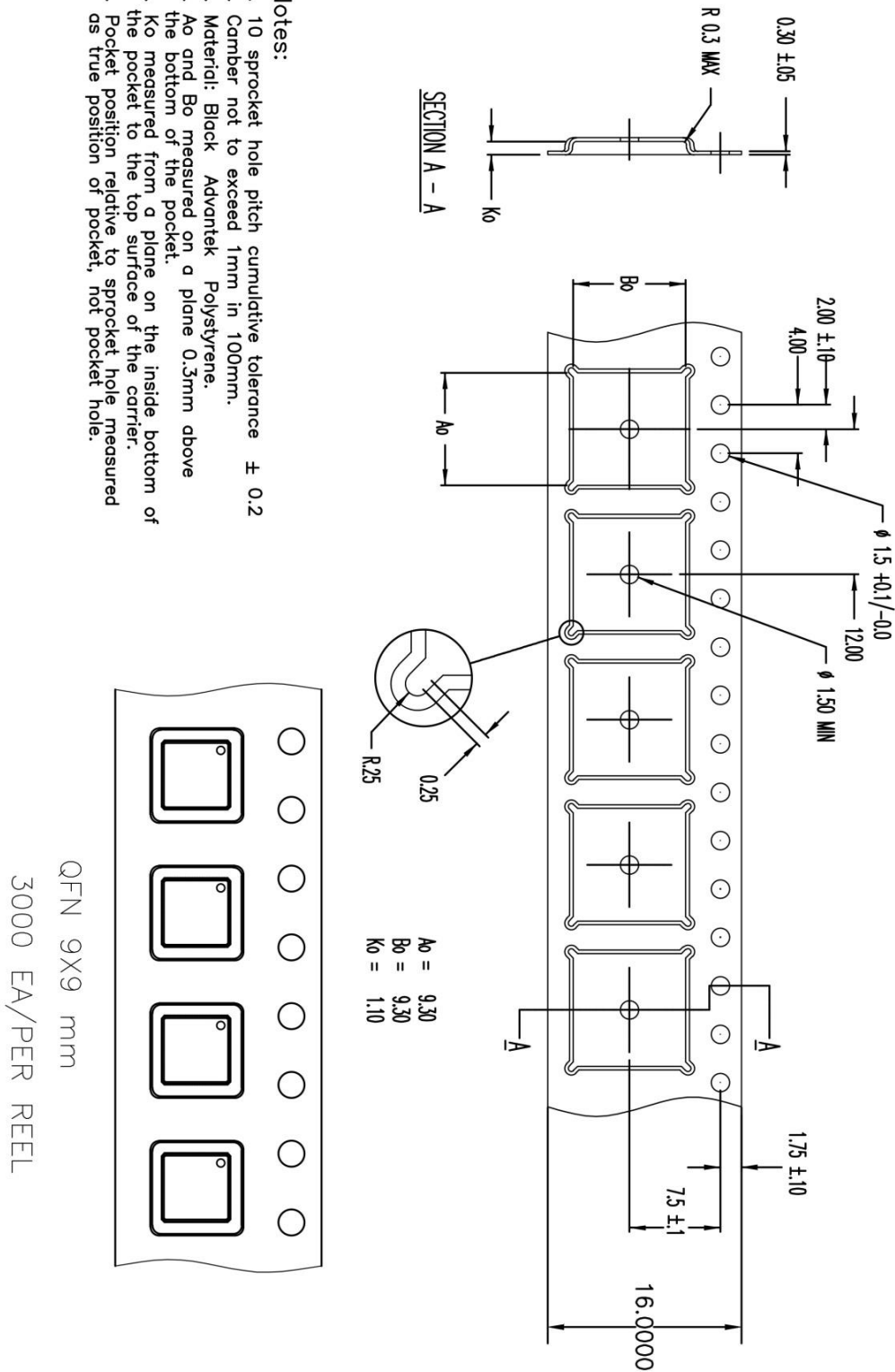
## 12BT815Q, BT816Q, FT905Q, FT906Q, FT907Q, FT908Q Reel Dimensions



**Figure 12.1 BT815Q, BT816Q, FT905Q, FT906Q, FT907Q, FT908Q Reel Dimensions**

## 13 BT815Q, BT816Q, FT905Q, FT906Q, FT907Q, FT908Q Tape Dimensions

- Notes:
1. 10 sprocket hole pitch cumulative tolerance  $\pm 0.2$
  2. Camber not to exceed 1mm in 100mm.
  3. Material: Black Advantek Polystyrene.
  4.  $A_0$  and  $B_0$  measured on a plane 0.3mm above the bottom of the pocket.
  5.  $K_0$  measured from a plane on the inside bottom of the pocket to the top surface of the carrier.
  6. Pocket position relative to sprocket hole measured as true position of pocket, not pocket hole.



**Figure 13.1 BT815Q, BT816Q, FT905Q, FT906Q, FT907Q, FT908Q Tape Dimensions**

# 14 BT815Q, BT816Q, FT905Q, FT906Q, FT907Q, FT908Q Tray Dimensions

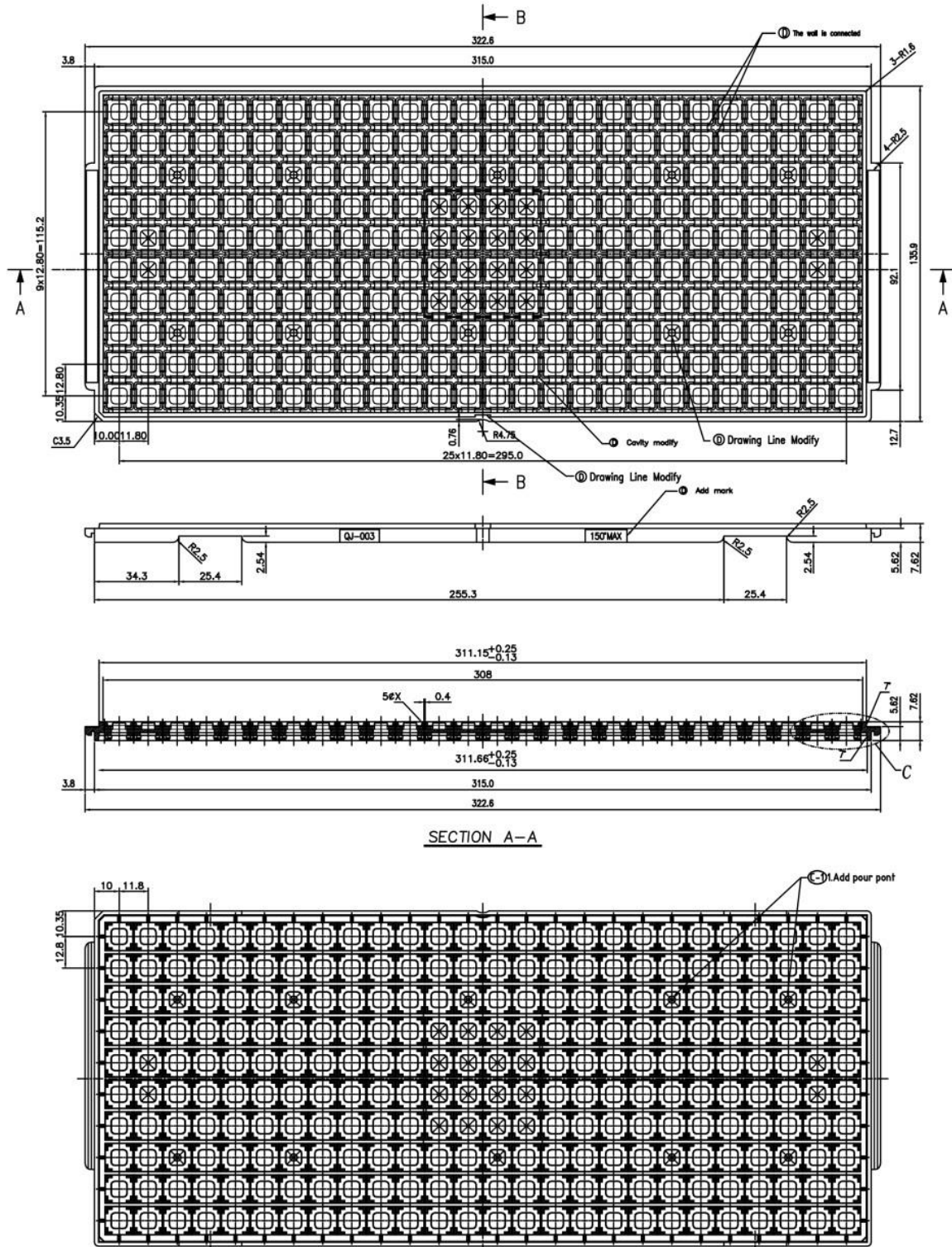
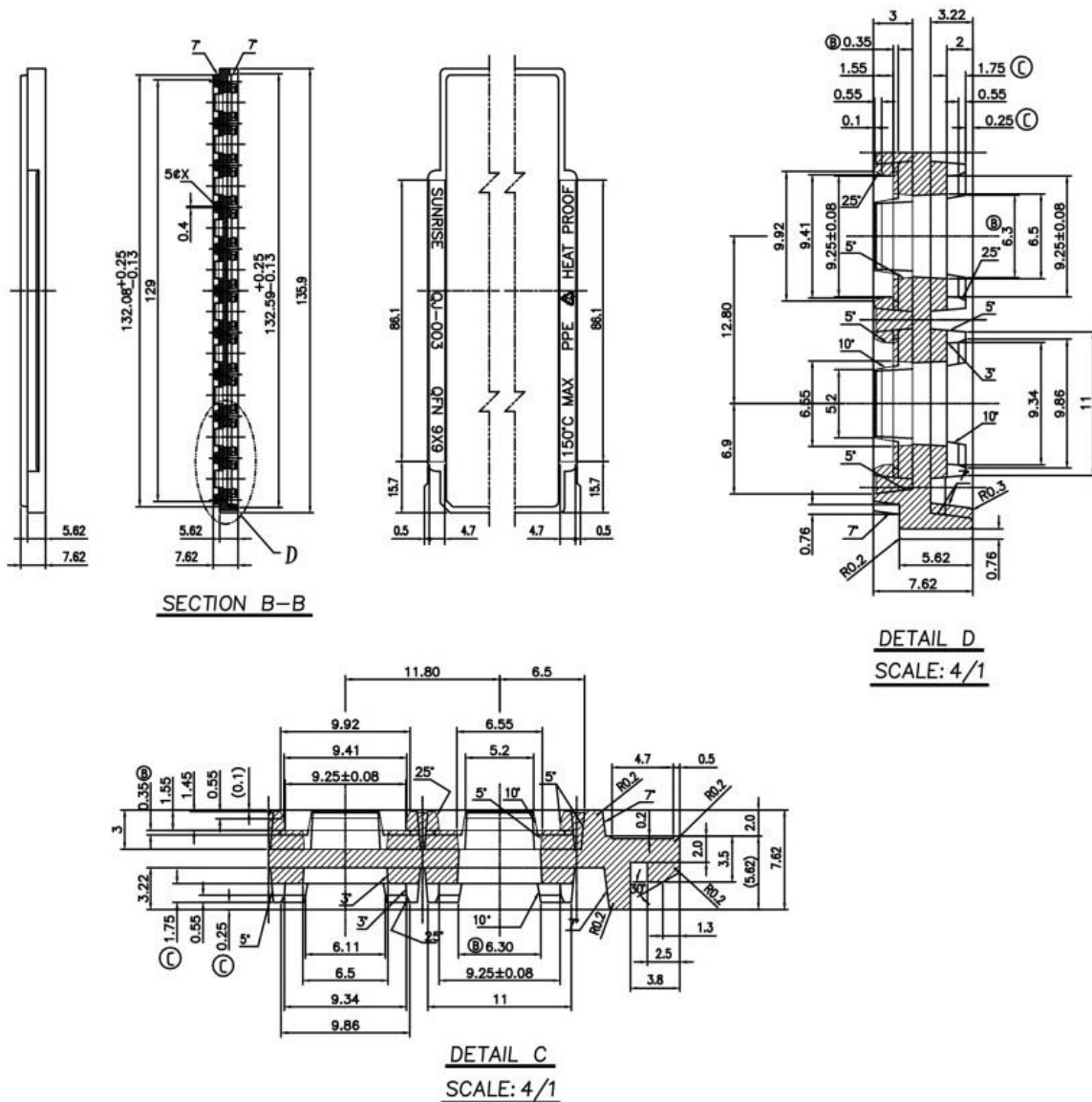


Figure 14.1 BT815Q, BT816Q, FT905Q, FT906Q, FT907Q, FT908Q Tray Dimensions

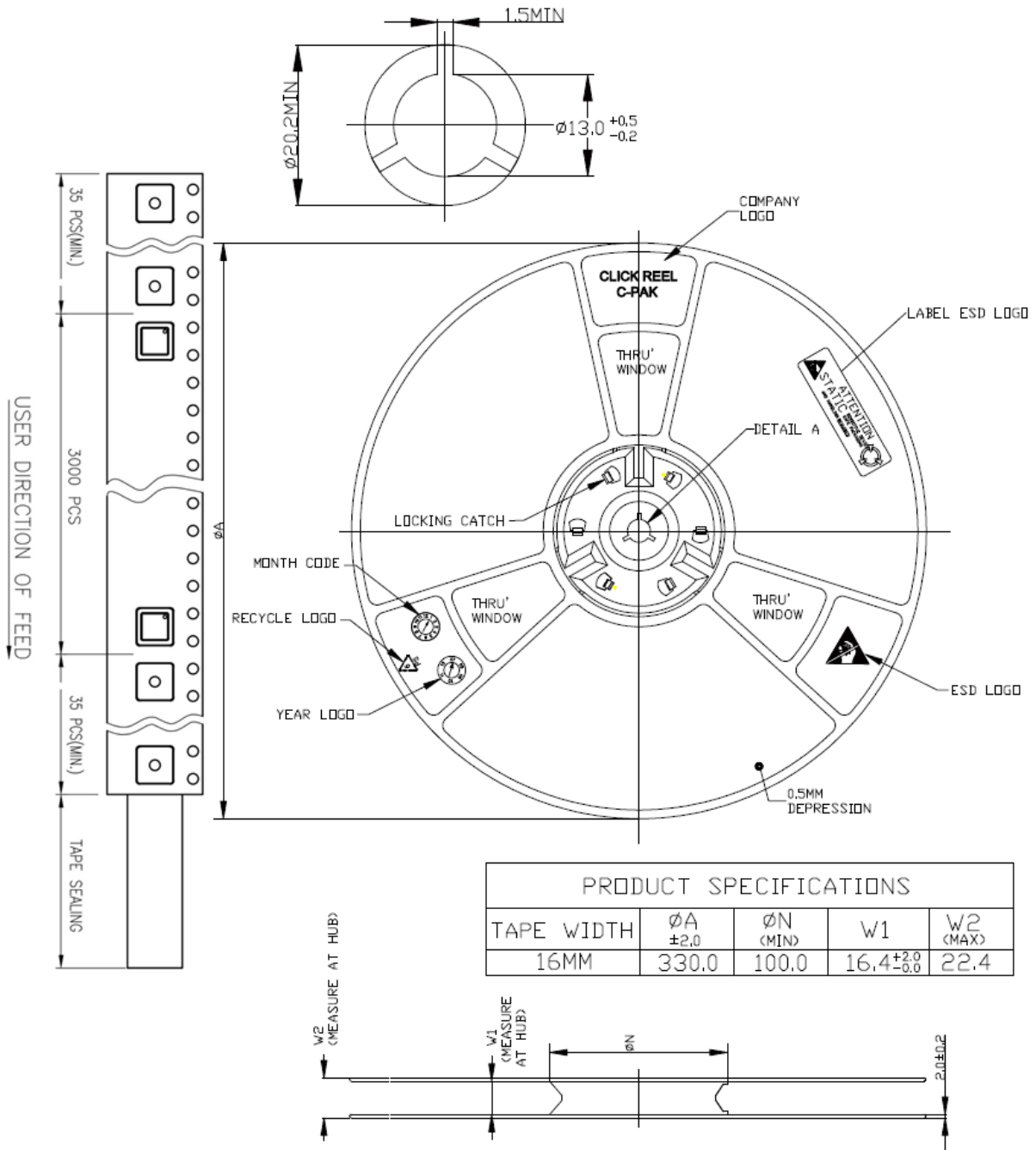


**NOTE :**

1. HEAT RESISTANCE UP TO 24 HOURS 150°C.
- ② 2. SURFACE ELECTRIC RESISTIVITY  $1 \times 10^5 \sim 9 \times 10^9 \Omega / \text{sq}$
3. WARPAGE IS WITHIN 0.76mm.
4. TOLERANCE : X=±0.5mm  
                   X.X=±0.25mm  
                   X.XX=±0.13mm
5. Material : PPE+Carbon Fiber

**Figure 14.2 BT815Q, BT816Q, FT905Q, FT906Q, FT907Q, FT908Q Tray Dimensions**

## 15 BT817Q, BT818Q, Reel Dimensions



**Figure 15.1 BT817Q, BT818Q, Reel Dimensions**

## 16 BT817Q, BT818Q Tape Dimensions

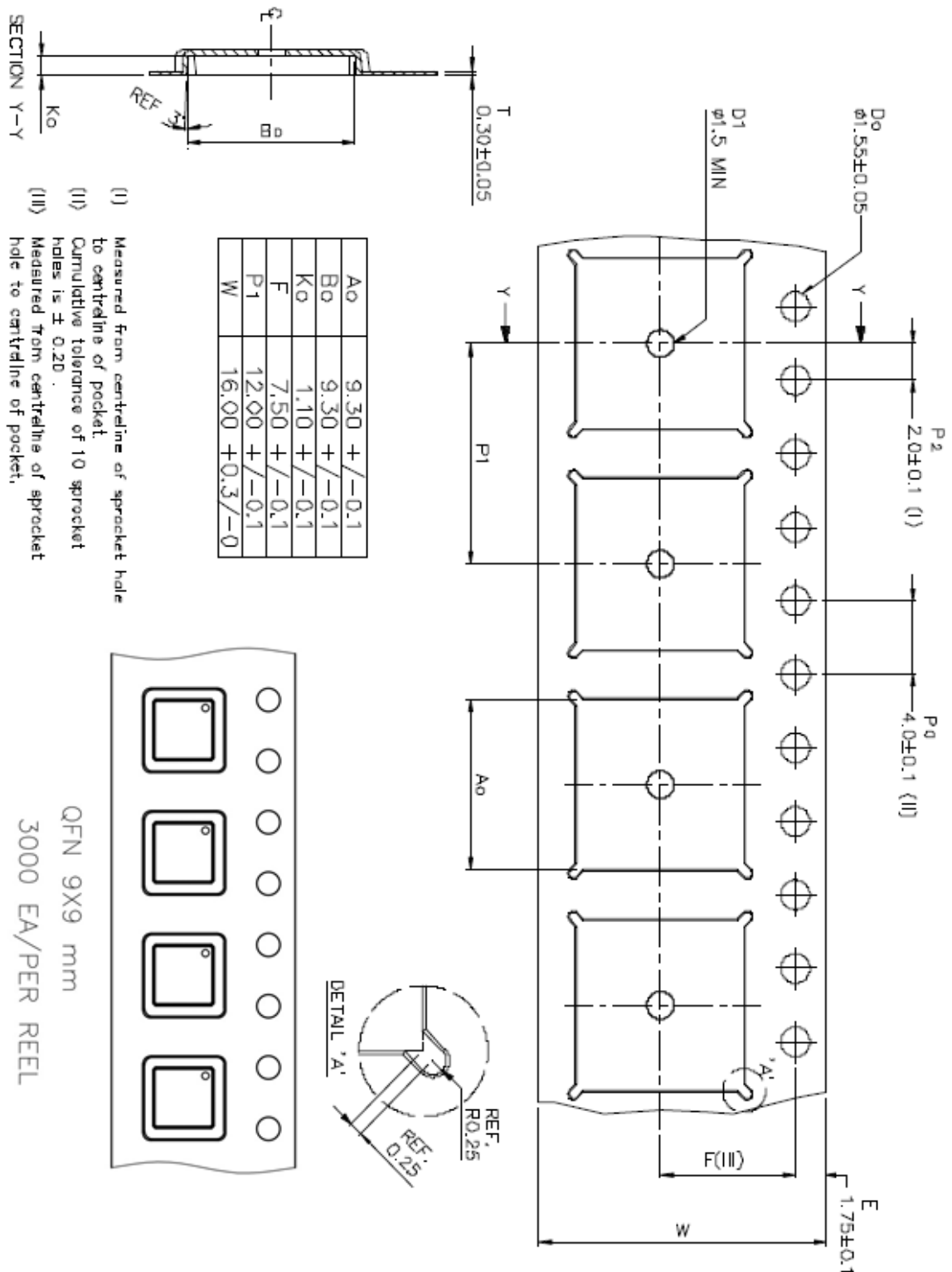
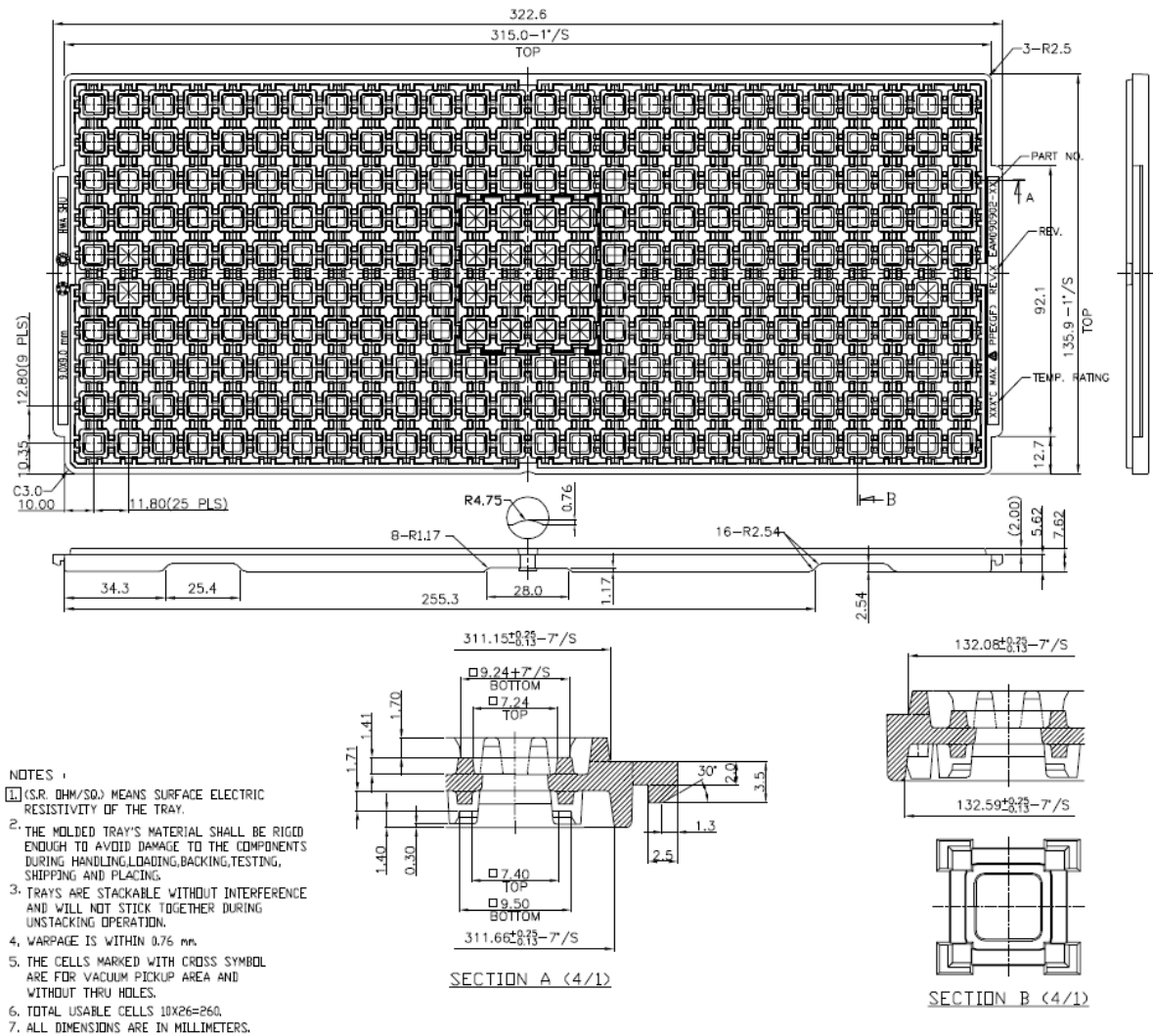
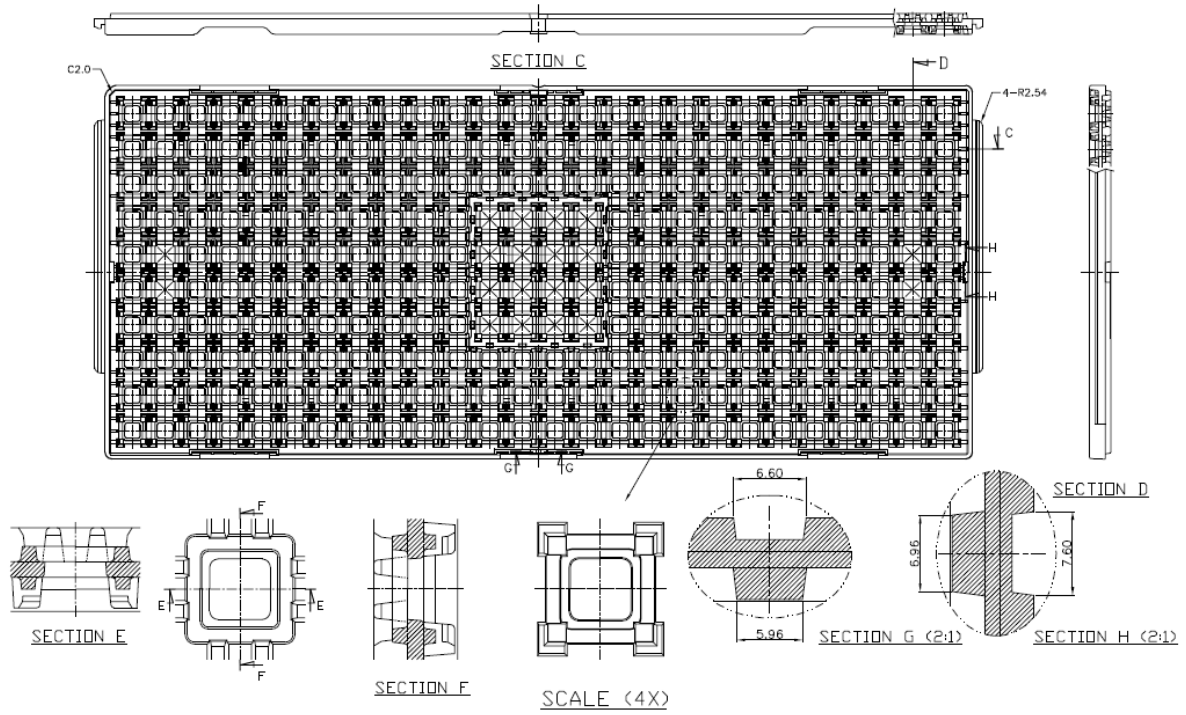


Figure 16.1 BT817Q, BT818Q, Tape Dimensions

## 17 BT817Q, BT818Q, Tray Dimensions



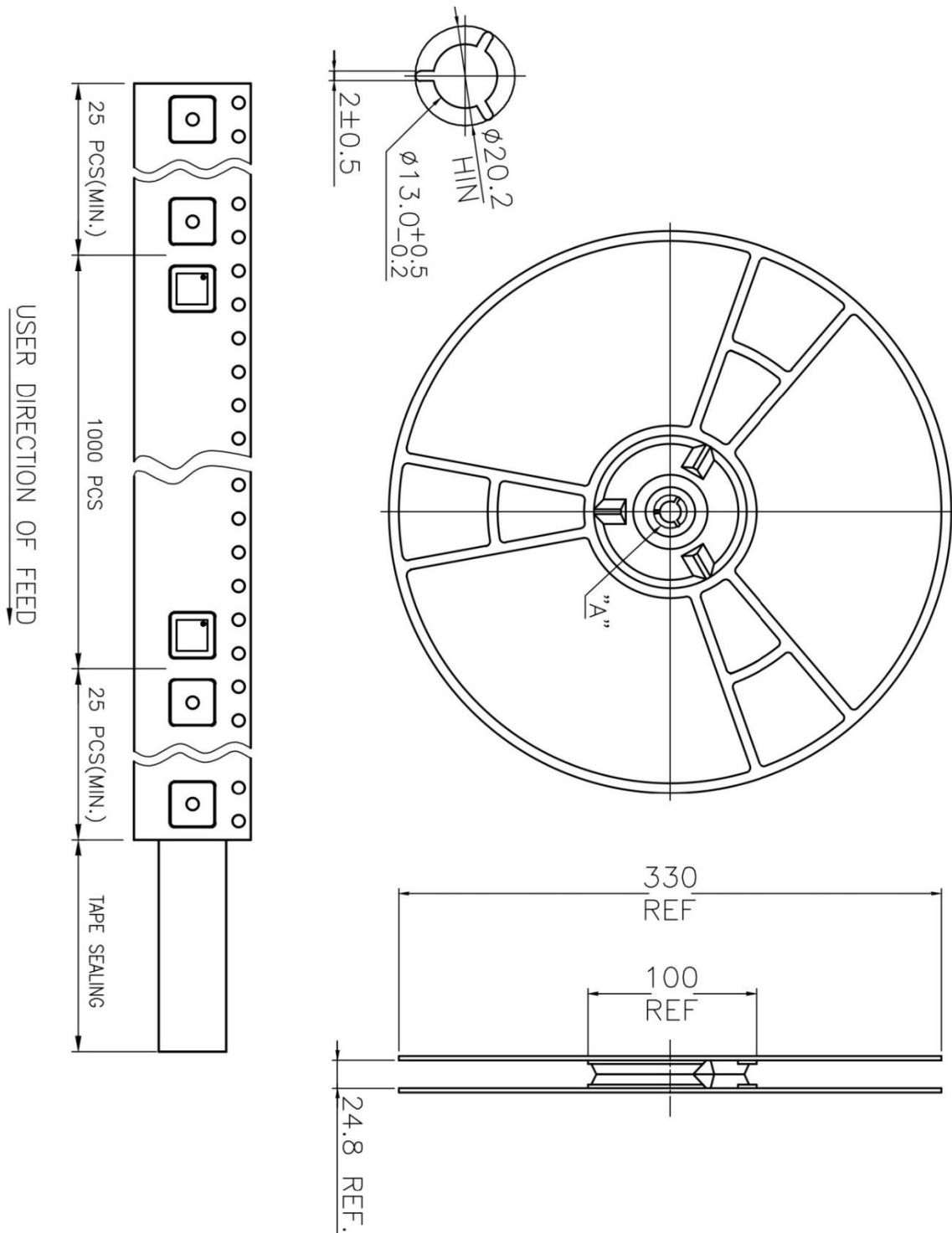
**Figure 17.1 BT817Q, BT818Q Tray Dimensions**



**Figure 17.2 BT817Q, BT818Q Tray Dimensions**



## 18 FT900Q, FT901Q, FT902Q, FT903Q Reel Dimensions

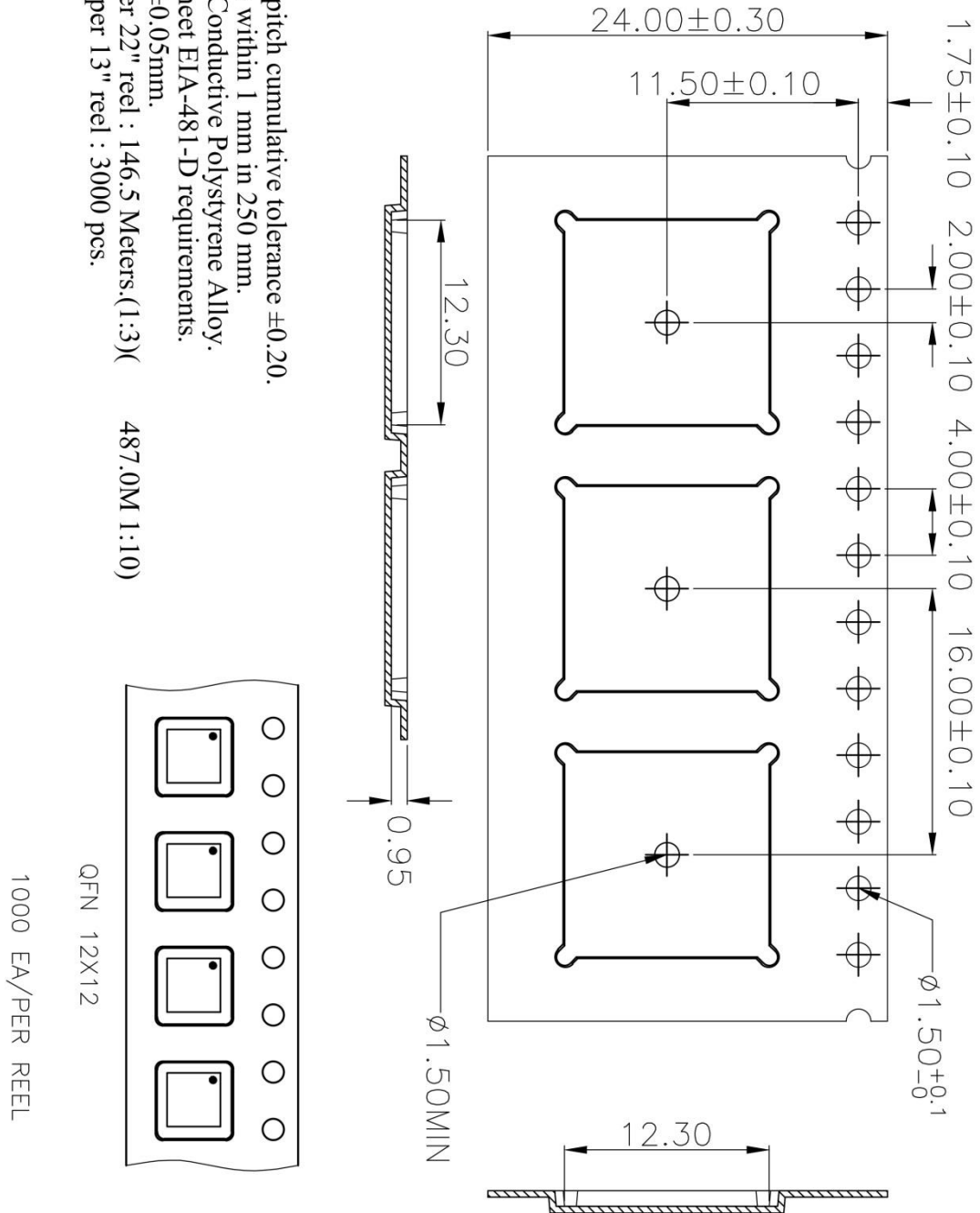


**Figure 18.1 FT900Q, FT901Q, FT902Q, FT903Q Reel Dimensions**

## 19 FT900Q, FT901Q, FT902Q, FT903Q Tape Dimensions

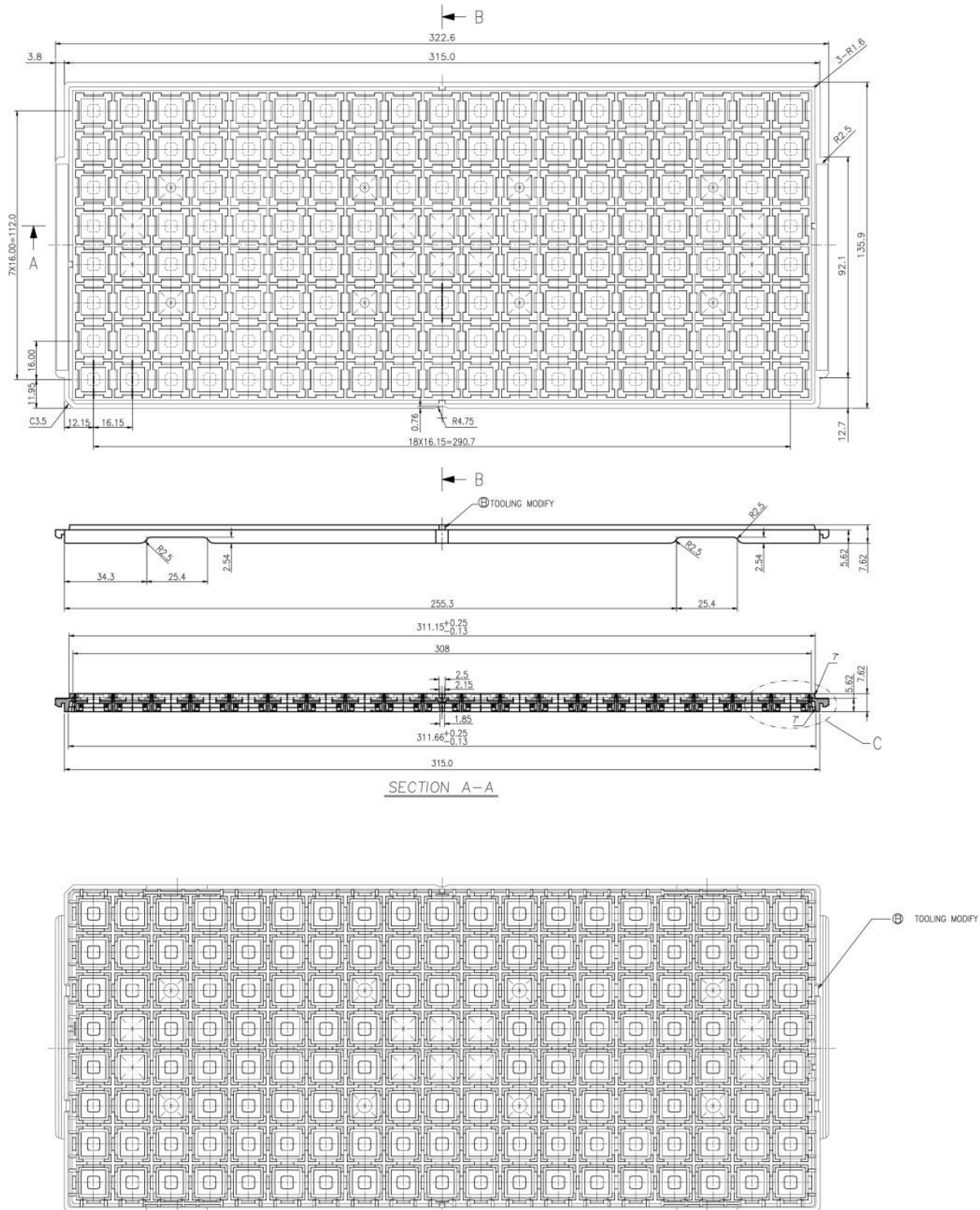
1. 10 sprocket hole pitch cumulative tolerance  $\pm 0.20$ .
2. Carrier camber is within 1 mm in 250 mm.
3. Material : Black Conductive Polystyrene Alloy.
4. All dimensions meet EIA-481-D requirements.
5. Thickness :  $0.30 \pm 0.05$ mm.
6. Packing length per 22" reel : 146.5 Meters.(1:3)
7. Component load per 13" reel : 3000 pcs.

487.0M 1:10)

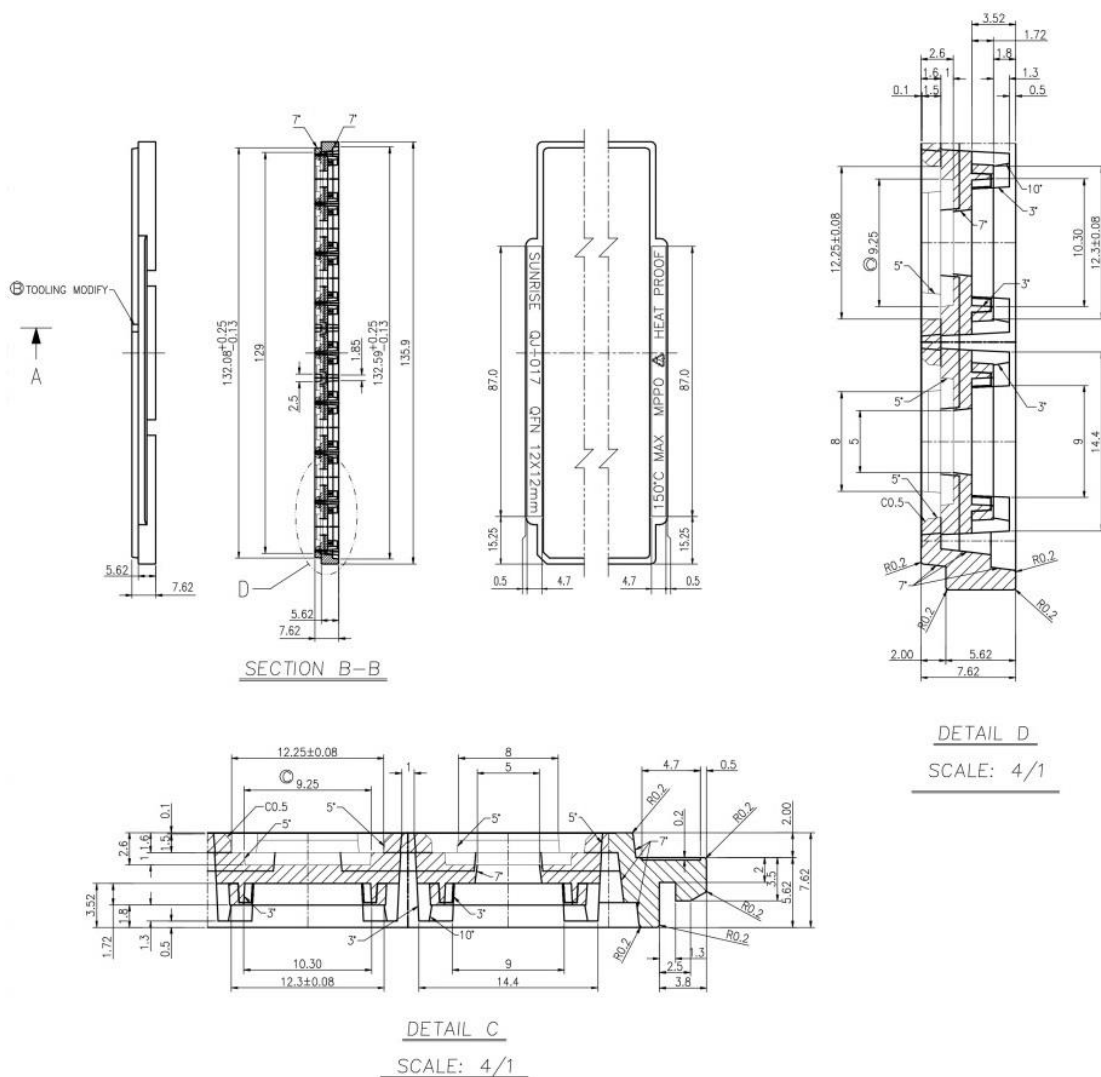


**Figure 19.1 FT900Q, FT901Q, FT902Q, FT903Q Tape Dimensions**

## 20 FT900Q, FT901Q, FT902Q, FT903Q Tray Dimensions



**Figure 20.1 FT900Q, FT901Q, FT902Q, FT903Q Tray Dimensions**



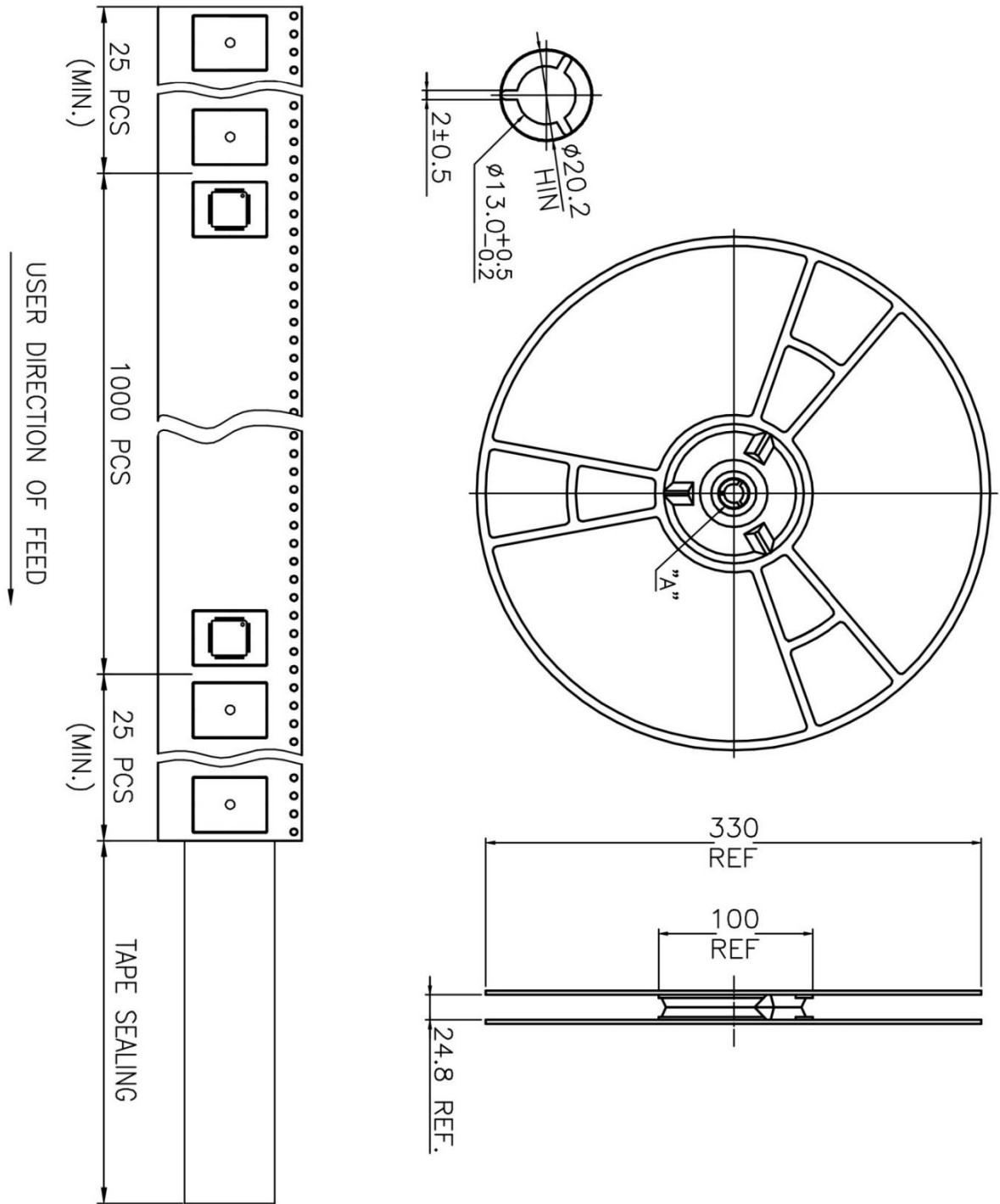
TOLERANCE	
X	±0.5
X.X	±0.25
X.XX	±0.13
ANGULAR	±0.5°

NOTE :

1. HEAT RESISTANCE UP TO 24 HOURS 150°C.
2. SURFACE ELECTRIC RESISTIVITY LESS THAN  $10^{11} \Omega/\text{sq}$
3. WARPAGE IS WITHIN 0.76mm.
4. FORBID USING THE FIRST CLASS ENVIRONMENT RESTRICTS SUBSTANCES MATERIAL

**Figure 20.2 FT900Q, FT901Q, FT902Q, FT903Q Tray Dimensions**

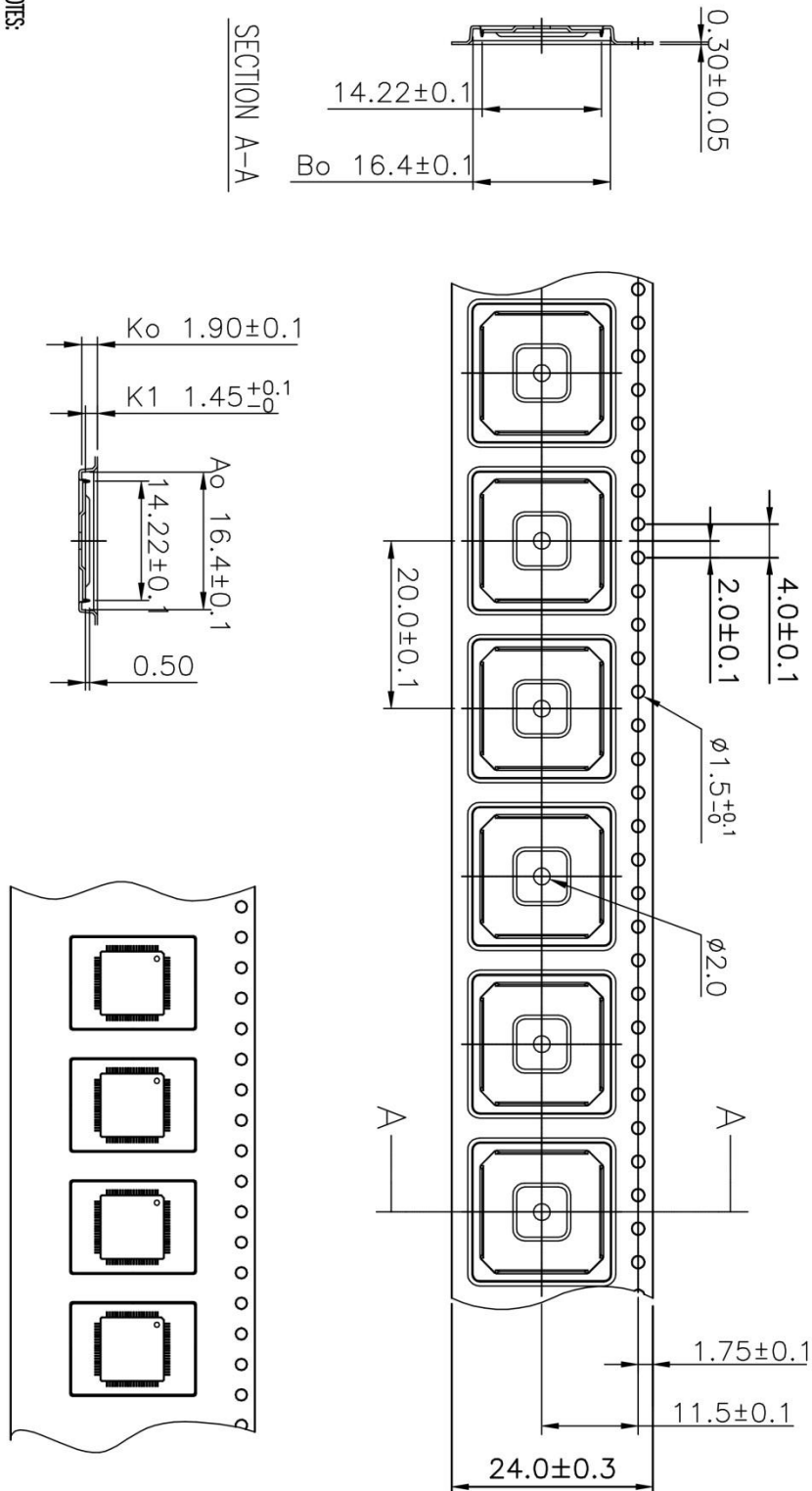
## 21 FT900L, FT901L, FT902L, FT903L Reel Dimensions



**Figure 21.1 FT900L, FT901L, FT902L, FT903L Reel Dimensions**

## 22 FT900L, FT901L, FT902L, FT903L Tape Dimensions

- NOTES:
1. TO SPROCKET HOLE PITCH CUMULATIVE TOLERANCE ±0.2
  2. CAMBER IN COMPLIANCE WITH EA 481
  3. POCKET POSITION RELATIVE TO SPROCKET HOLE MEASURED AS TRUE POSITION OF POCKET, NOT POCKET HOLE
  4. COVER TAPE WIDTH : 21.3±0.1



**Figure 22.1 FT900L, FT901L, FT902L, FT903L Tape Dimensions**

## 23 FT900L, FT901L, FT902L, FT903L Tray Dimensions

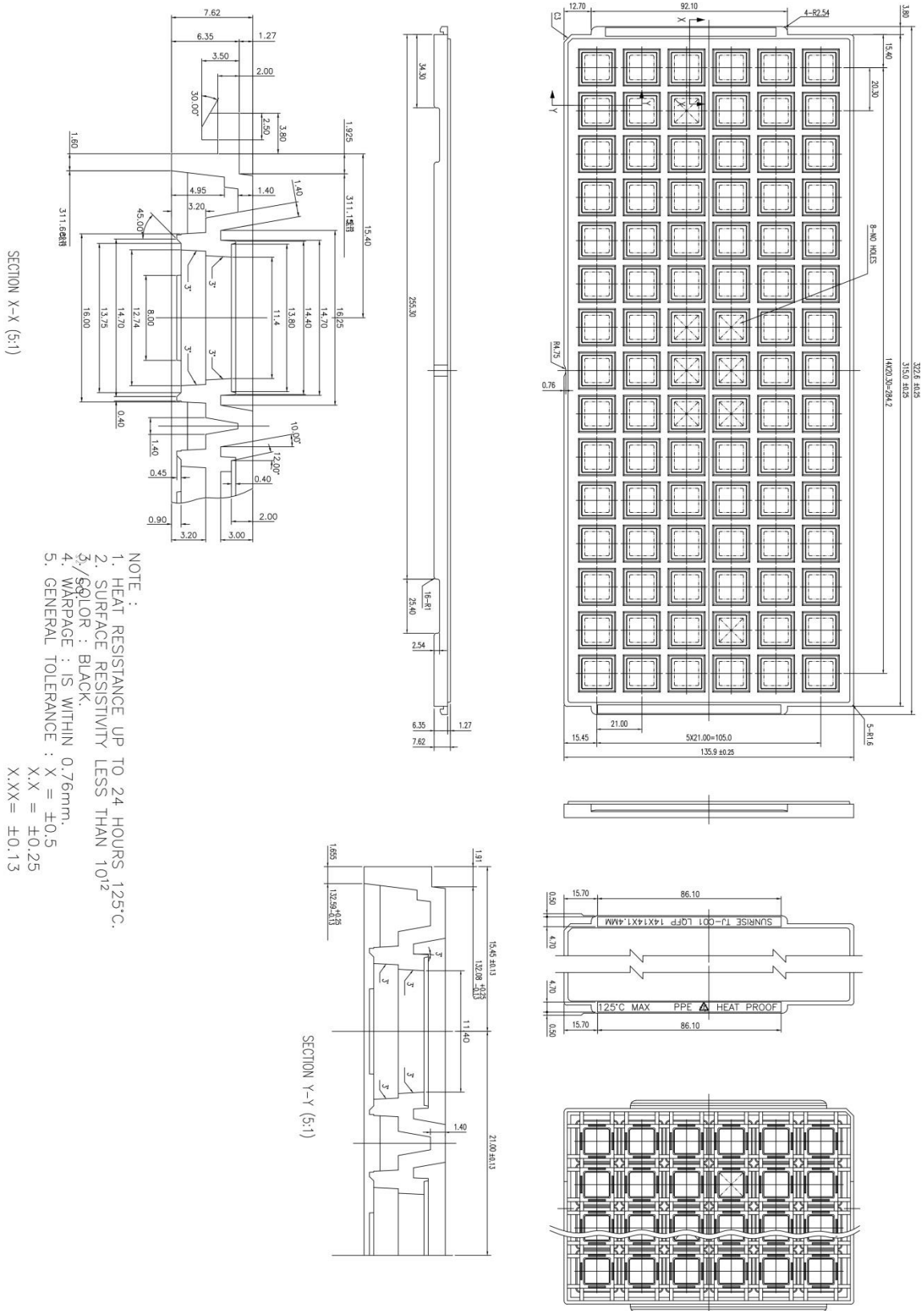
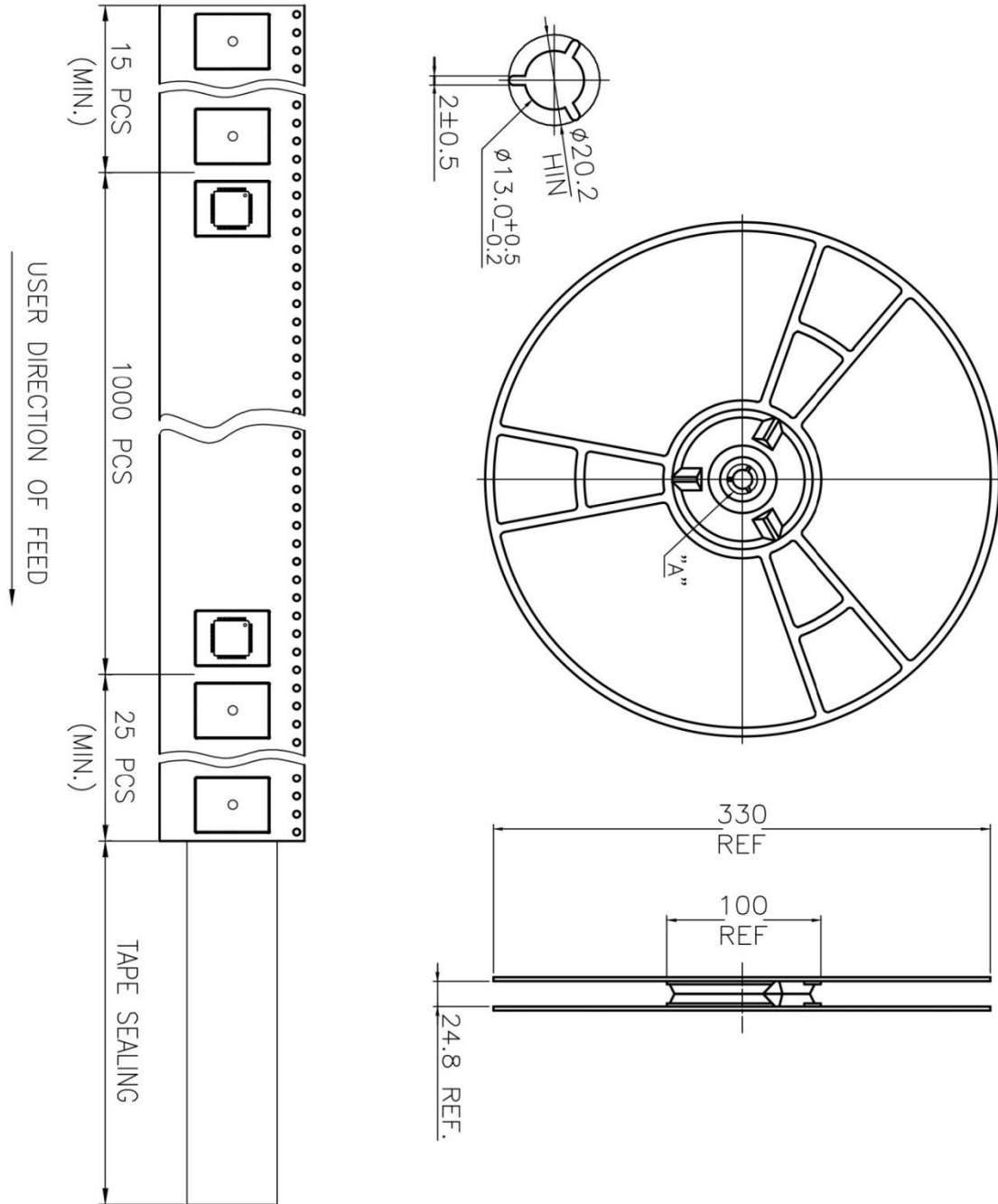


Figure 23.1 FT900L, FT901L, FT902L, FT903L Tray Dimensions

## 24 FT905L, FT906L, FT907L, FT908L Reel Dimensions

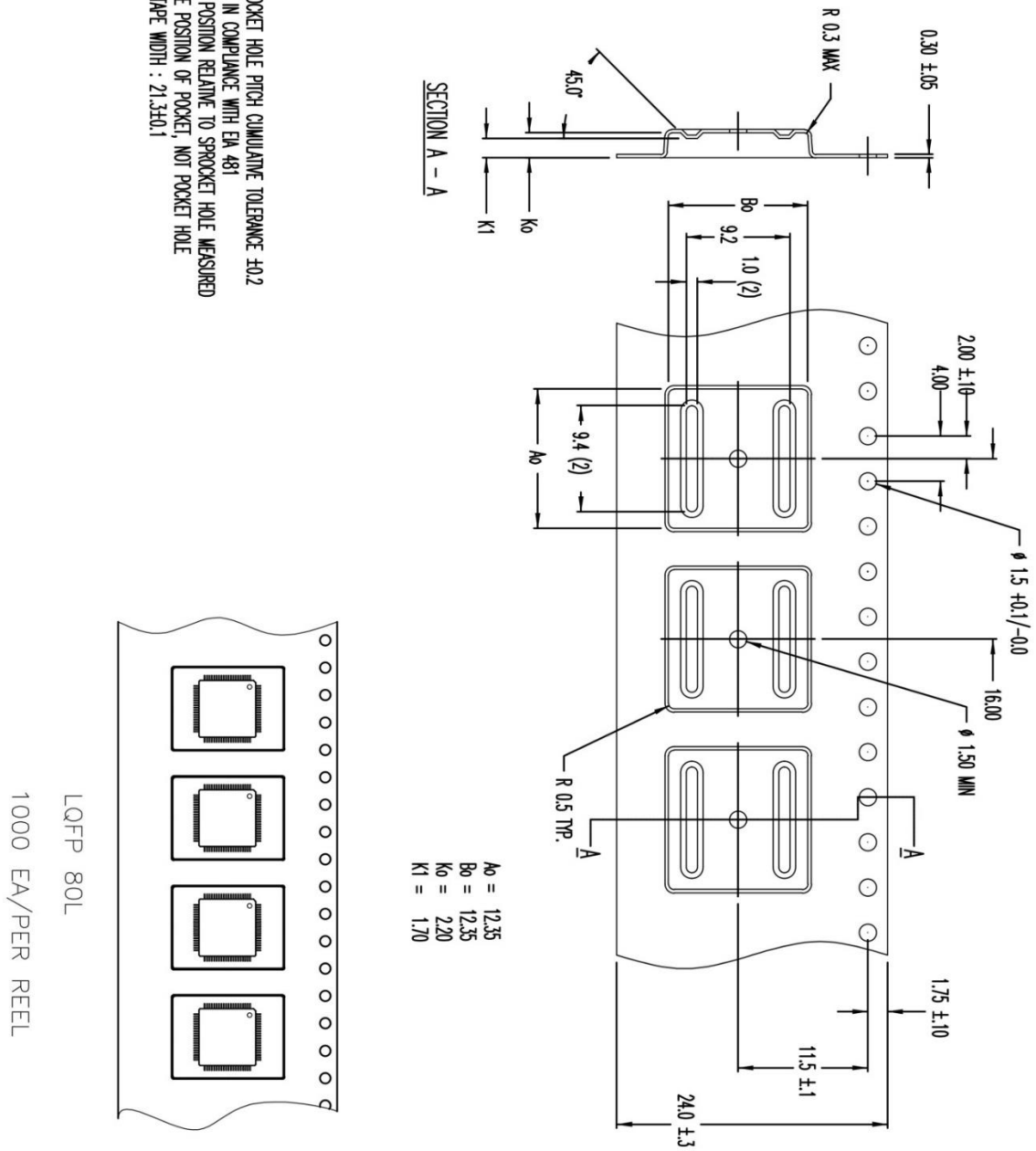


**Figure 24.1 FT905L, FT906L, FT907L, FT908L Reel Dimensions**



## 25 FT900L, FT901L, FT902L, FT903L Tape Dimensions

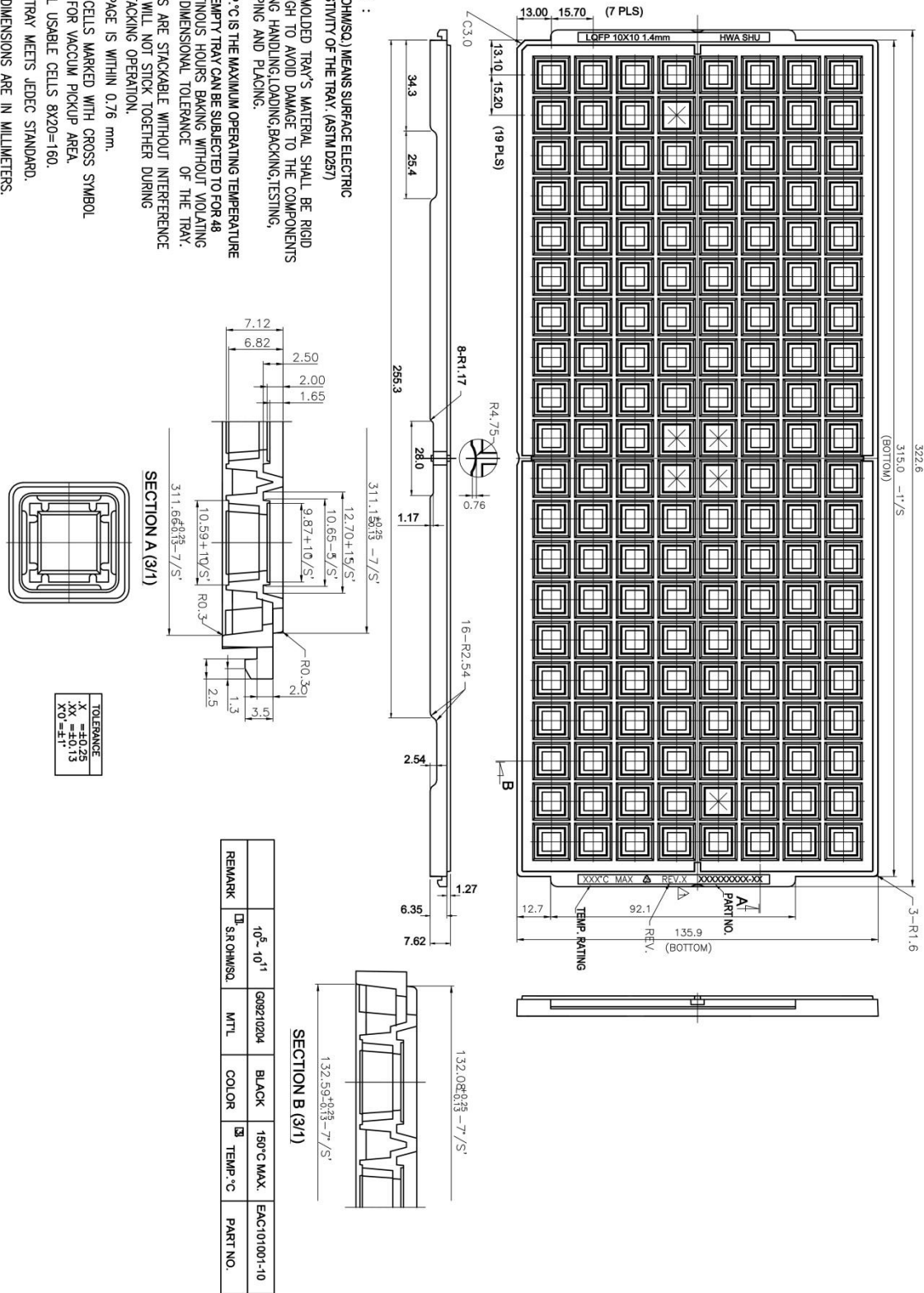
- NOTES:
1. 10 SPROCKET HOLE PITCH CUMULATIVE TOLERANCE  $\pm 0.2$
  2. CAMBER IN COMPLIANCE WITH EN 481
  3. POCKET POSITION RELATIVE TO SPROCKET HOLE MEASURED AS TRUE POSITION OF POCKET, NOT POCKET HOLE
  4. COVER TAPE WIDTH :  $21.3 \pm 0.1$



**Figure 25.1 FT905L, FT906L, FT907L, FT908L Tape Dimensions**

## 26 FT900L, FT901L, FT902L, FT903L Tray Dimensions

- NOTES :
1. (S.R. OHMSQ) MEANS SURFACE ELECTRIC RESISTIVITY OF THE TRAY. (ASTM D287)
  2. THE MOLDED TRAY'S MATERIAL SHALL BE RIGID ENOUGH TO AVOID DAMAGE TO THE COMPONENTS DURING HANDLING, LOADING, BACKING, TESTING, SHIPPING AND PLACING.
  3. TEMP °C IS THE MAXIMUM OPERATING TEMPERATURE THE EMPTY TRAY CAN BE SUBJECTED TO FOR 48 CONTINUOUS HOURS BAKING WITHOUT VIOLATING THE DIMENSIONAL TOLERANCE OF THE TRAY.
  4. TRAYS ARE STACKABLE WITHOUT INTERFERENCE AND WILL NOT STICK TOGETHER DURING UNSTACKING OPERATION.
  5. WARPAGE IS WITHIN 0.76 mm.
  6. THE CELLS MARKED WITH CROSS SYMBOL ARE FOR VACUUM PICKUP AREA.
  7. TOTAL USABLE CELLS 8X20=160.
  8. THE TRAY MEETS JEDEC STANDARD.
  9. ALL DIMENSIONS ARE IN MILLIMETERS.



**Figure 26.1 FT905L, FT906L, FT907L, FT908L Tray Dimensions**

---

## 27 Contact Information

### Head Quarters – Singapore

Bridgetek Pte Ltd  
178 Paya Lebar Road, #07-03  
Singapore 409030  
Tel: +65 6547 4827  
Fax: +65 6841 6071

E-mail (Sales) [sales.apac@brtchip.com](mailto:sales.apac@brtchip.com)  
E-mail (Support) [support.apac@brtchip.com](mailto:support.apac@brtchip.com)

### Branch Office – Taipei, Taiwan

Bridgetek Pte Ltd, Taiwan Branch  
2 Floor, No. 516, Sec. 1, Nei Hu Road, Nei Hu District  
Taipei 114  
Taiwan, R.O.C.  
Tel: +886 (2) 8797 1330  
Fax: +886 (2) 8751 9737

E-mail (Sales) [sales.apac@brtchip.com](mailto:sales.apac@brtchip.com)  
E-mail (Support) [support.apac@brtchip.com](mailto:support.apac@brtchip.com)

### Branch Office - Glasgow, United Kingdom

Bridgetek Pte. Ltd.  
Unit 1, 2 Seaward Place, Centurion Business Park  
Glasgow G41 1HH  
United Kingdom  
Tel: +44 (0) 141 429 2777  
Fax: +44 (0) 141 429 2758

E-mail (Sales) [sales.emea@brtchip.com](mailto:sales.emea@brtchip.com)  
E-mail (Support) [support.emea@brtchip.com](mailto:support.emea@brtchip.com)

### Branch Office – Vietnam

Bridgetek VietNam Company Limited  
Lutaco Tower Building, 5th Floor, 173A Nguyen Van  
Tro, Ward 11, Phu Nhuan District,  
Ho Chi Minh City, Vietnam  
Tel : 08 38453222  
Fax : 08 38455222

E-mail (Sales) [sales.apac@brtchip.com](mailto:sales.apac@brtchip.com)  
E-mail (Support) [support.apac@brtchip.com](mailto:support.apac@brtchip.com)

### Web Site

<http://brtchip.com/>

### Distributor and Sales Representatives

Please visit the Sales Network page of the [Bridgetek Web site](#) for the contact details of our distributor(s) and sales representative(s) in your country.

System and equipment manufacturers and designers are responsible to ensure that their systems, and any Bridgetek Pte Ltd (BRTChip) devices incorporated in their systems, meet all applicable safety, regulatory and system-level performance requirements. All application-related information in this document (including application descriptions, suggested Bridgetek devices and other materials) is provided for reference only. While Bridgetek has taken care to assure it is accurate, this information is subject to customer confirmation, and Bridgetek disclaims all liability for system designs and for any applications assistance provided by Bridgetek. Use of Bridgetek devices in life support and/or safety applications is entirely at the user's risk, and the user agrees to defend, indemnify and hold harmless Bridgetek from any and all damages, claims, suits or expense resulting from such use. This document is subject to change without notice. No freedom to use patents or other intellectual property rights is implied by the publication of this document. Neither the whole nor any part of the information contained in, or the product described in this document, may be adapted or reproduced in any material or electronic form without the prior written consent of the copyright holder. Bridgetek Pte Ltd, 178 Paya Lebar Road, #07-03, Singapore 409030. Singapore Registered Company Number: 201542387H.

---

## Appendix A– References

### Document References

N/A

### Acronyms and Abbreviations

Terms	Description
LQFP	Low Profile Quad Flat Pack
QFN	Quad Flat No-Leads Package

## Appendix B – List of Tables & Figures

### List of Tables

Table 2.1 – Tape and Reel Quantities .....	5
Table 2.2 – Tray Quantities .....	5

### List of Figures

Figure 1.1 Tape and Reel Pin1 Identifier.....	4
Figure 1.2 Tray Pin1 Identifier .....	4
Figure 3.1 FT800Q, FT801Q Reel Dimensions .....	6
Figure 4.1 FT800Q, FT801Q Tape Dimensions.....	7
Figure 5.1 FT800Q, FT801Q Tray Dimensions .....	8
Figure 5.2 FT800Q, FT801Q Tray Dimensions .....	9
Figure 6.1 FT810Q, FT811Q, FT932Q, FT933Q Reel Dimensions .....	10
Figure 7.1 FT810Q, FT811Q, FT932Q, FT933Q Tape Dimensions .....	11
Figure 8.1 FT810Q, FT811Q, FT932Q, FT933Q Tray Dimensions.....	12
Figure 8.2 FT810Q, FT811Q, FT932Q, FT933Q Tray Dimensions.....	13
Figure 9.1 FT812Q, FT813Q, FT930Q, FT931Q Reel Dimensions .....	14
Figure 10.1 FT812Q, FT813Q, FT930Q, FT931Q Tape Dimensions .....	15
Figure 11.1 FT812Q, FT813Q, FT930Q, FT931Q Tray Dimensions .....	16
Figure 12.1 BT815Q, BT816Q, FT905Q, FT906Q, FT907Q, FT908Q Reel Dimensions .....	17
Figure 13.1 BT815Q, BT816Q, FT905Q, FT906Q, FT907Q, FT908Q Tape Dimensions .....	18
Figure 14.1 BT815Q, BT816Q, FT905Q, FT906Q, FT907Q, FT908Q Tray Dimensions.....	19
Figure 14.2 BT815Q, BT816Q, FT905Q, FT906Q, FT907Q, FT908Q Tray Dimensions.....	20
Figure 15.1 BT817Q, BT818Q, Reel Dimensions .....	21
Figure 16.1 BT817Q, BT818Q, Tape Dimensions .....	22
Figure 17.1 BT817Q, BT818Q Tray Dimensions .....	23
Figure 17.2 BT817Q, BT818Q Tray Dimensions .....	24
Figure 18.1 FT900Q, FT901Q, FT902Q, FT903Q Reel Dimensions .....	25
Figure 19.1 FT900Q, FT901Q, FT902Q, FT903Q Tape Dimensions .....	26
Figure 20.1 FT900Q, FT901Q, FT902Q, FT903Q Tray Dimensions .....	27
Figure 20.2 FT900Q, FT901Q, FT902Q, FT903Q Tray Dimensions .....	28
Figure 21.1 FT900L, FT901L, FT902L, FT903L Reel Dimensions.....	29
Figure 22.1 FT900L, FT901L, FT902L, FT903L Tape Dimensions .....	30
Figure 23.1 FT900L, FT901L, FT902L, FT903L Tray Dimensions .....	31
Figure 24.1 FT905L, FT906L, FT907L, FT908L Reel Dimensions.....	32
Figure 25.1 FT905L, FT906L, FT907L, FT908L Tape Dimensions .....	33
Figure 26.1 FT905L, FT906L, FT907L, FT908L Tray Dimensions .....	34

---

## Appendix C– Revision History

Document Title: BRT\_AN\_049 Bridgetek Tape, Reel and Tray Dimensions  
Document Reference No.: BRT\_000256  
Clearance No.: BRT#137  
Product Page: <http://brtchip.com/>  
Document Feedback: [Send Feedback](#)

Revision	Changes	Date
1.0	Initial Release	12-06-2019
1.1	Updated to include BT817Q and BT818Q	18-11-2020