

IDM2040-21R Datasheet



1 Introduction

IDM2040-21R is a 2.1-inch Rotary Dial Display, which was designed using Raspberry Pi RP2040 microcontroller with FT800Q, a rotary encoder with button, RS-485 transceiver and a 2.1-inch round LCD.

1.1 Features

- The host MCU RP2040 is a microcontroller unit (MCU) developed by Raspberry Pi, Dual ARM 32-bit Cortex-M0+ Core processors running at up to 133 MHz, 264KB of SRAM, and 8MB of on-board Flash memory.
- 2.1-inch Round LCD Screen: 480x480 resolution with capacitive touch support.
- 1 x UART: Universal Asynchronous Receiver-Transmitter for serial communication.
- 1 x RS-485: for long distance and reliable communication with other devices.
- RGB666 hardware interface for high-quality color display.
- Rotary Encoder: 24 steps with a push button for input and control.
- Touch Interface: The display includes pins for Touch Panel Interface (SDA, SCL, RST#, INT#, etc.), which are used for I2C communications with the touch controller CST826 which is compatible with FT3267.
- LCD Resolution: 480x480 pixels, display type: IPS TFT LCD, controller: ST7701S, brightness: 300 cd/m² (typical), viewing angle: 80° in all directions.
- Single 5V power supply from USB-C or 6-pin JST connector.
- Supports C/C++, MicroPython, CircuitPython development.
- 1xTYPE C USB Connector: provides 5V and can be used for firmware upgrade.
- Supports USB upgrade firmware.
- Debugging and Programming: BOOTSEL mode for programming via USB (drag-and-drop UF2 support)

Neither the whole nor any part of the information contained in, or the product described in this manual, may be adapted, or reproduced in any material or electronic form without the prior written consent of the copyright holder. This product and its documentation are supplied on an as-is basis and no warranty as to their suitability for any particular purpose is either made or implied. Bridgetek Pte Ltd will not accept any claim for damages howsoever arising as a result of use or failure of this product. Your statutory rights are not affected. This product or any variant of it is not intended for use in any medical appliance, device, or system in which the failure of the product might reasonably be expected to result in personal injury. This document provides preliminary information that may be subject to change without notice. No freedom to use patents or other intellectual property rights is implied by the publication of this document. Bridgetek Pte Ltd, 1 Tai Seng Avenue, Tower A, #03-05, Singapore 536464. Singapore Registered Company Number: 201542387H.

1.2 Typical Applications

- Home Automation Systems: Smart Thermostats, Lighting Control.
- Audio Equipment: Mixing Consoles, Hi-Fi Systems.
- Medical Devices: Portable Medical Monitors, Patient Monitoring Devices.
- Industrial Applications: Control Panels, Measurement Instrument.
- Automotive Interfaces: Infotainment Systems, Dashboards
- Consumer Electronics: Smart Speakers and Media Players, portable Gaming Consoles.
- Test and Measurement Equipment such as Oscilloscopes and Multimeters.
- and many more.

2 Part Number/Ordering Information/Package Content

Part No.	Description
IDM2040-21R	2.1-inch Rotary Dial TFT Display

Table 1 - Part Number/Ordering Information

No.	Item	Quantity	Description
1	IDM2040-21R	1	2.1-inch Rotary Dial Display
2	JST ZH1.5 to Dupont 2.54 female 6 pin cable	1	JST ZH1.5mm pitch 6 pin to Dupont 2.54mm Female 6 pin jumper wire. The length of each cable is approx. 20 cm/7.87 inches.

Table 2 - Package Content

3 Block Diagram

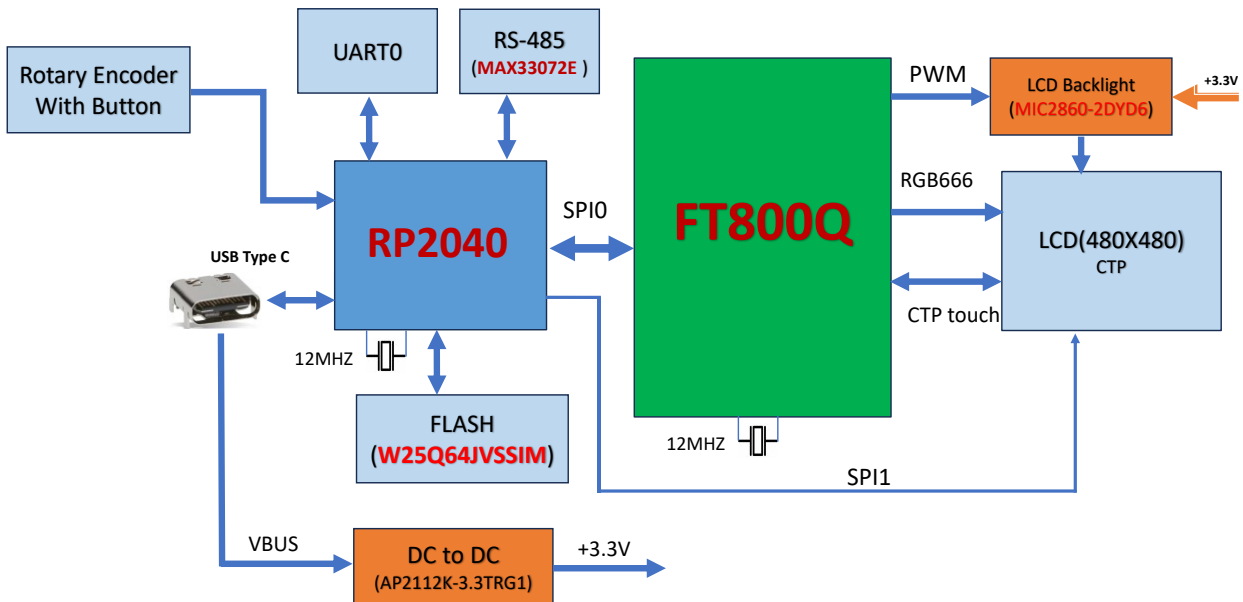


Figure 1 - IDM2040-21R Block Diagram



Figure 2 - IDM2040-21R Front and Back View

Table of Contents

1	Introduction	1
1.1	Features.....	1
1.2	Typical Applications	2
2	Part Number/Ordering Information/Package Content	3
3	Block Diagram	4
4	Hardware Description.....	7
4.1	Schematic Description	7
4.1.1	DC to DC converter	7
4.1.2	Host MCU and Peripherals	7
4.1.3	Touch Interface.....	8
4.1.4	LCD Backlight	9
4.2	Connector Description.....	9
4.2.1	CN1.....	9
4.2.2	CN2.....	9
4.2.3	CN3.....	10
4.2.4	CN4.....	10
4.2.5	CN5.....	10
4.2.6	CN6.....	11
4.2.7	SW1	11
4.2.8	SW2	11
4.2.9	SW3	11
5	Graphical User Interface	12
5.1	Aircon Control	12
5.2	Lighting Control	12
5.3	Floor Heating Control	13
5.4	Curtain Control	13
6	Software Development	14
6.1	C/C++ Environment Installation.....	14
6.2	MicroPython Environment Installation.....	14
6.3	CircuitPython Environment Installation	14
7	Firmware Update.....	15
7.1	MCU Firmware Update	15

7.2	C Code for LCD Initialization	15
7.3	Upload Capacitive Touch Firmware to FT800	15
8	Schematic Diagram	16
9	Hardware Parameters	18
10	Mechanical Information.....	19
10.1	Mechanical Drawing.....	19
10.2	PCB Dimension.....	20
11	Disclaimer Notice: Use of Third-Party Software or Websites	21
12	Warranty Statement.....	22
13	Contact Information	23
Appendix A	– References	24
Document References		24
Acronyms and Abbreviations.....		24
Appendix B	– List of Figures and Tables.....	25
List of Figures		25
List of Tables.....		25
Appendix C	– Revision History	26

4 Hardware Description

4.1 Schematic Description

4.1.1 DC to DC converter

- A DC-DC step-down converter circuit based on the AP2112K-3.3TRG1 (U1), which provides a regulated +3.3V output from a +5V USB VBUS input.
- The AP2112K-3.3TRG1 (U1) is a low-dropout linear regulator. It regulates the +5V input down to +3.3V. Pin 3 of U1 (EN, enable pin) is connected to VIN (+5V) to enable the regulator. This ensures that the output is active whenever the +5V input is present.
- The device can provide up to 600mA of output current, which is suitable for powering the RP2040 microcontroller, FT800 graphics controller, and LCD panel.
- Capacitors C3 and C4 are used for filtering the +3.3V output to stabilize the voltage and reduce noise.
- An LED (D1) with a current-limiting resistor R1 is connected across the +3.3V output to indicate power status. The LED lights up when the +3.3V output is active.

4.1.2 Host MCU and Peripherals

- IDM2040-21R uses RP2040 as HOST MCU. RP2040 is designed to work at 3.3V and IO level at 3.3V, all IOVDD PIN (PIN1, 10, 22, 33, 42, 49) and USB_VDD(PIN48), VREG_VIN(PIN44) and ADC_AVDD (PIN43) need to connect to +3.3V.
- DVDD (PIN50, 23) is digital core power supply, nominal voltage 1.1V can be connected to VREG_VOUT.
- The RP2040 microcontroller supports external Quad-SPI (QSPI) flash memory for storing program code and data. The maximum supported flash size is 16MB (128 Mbit) due to its 24-bit address bus. IDM2040-21R uses 8MB flash, U4 (W25Q64JVSSIQ), to store the user's application code and resources such as pictures, fonts, audios, etc.

Pin	Signals	Description
51	QSPI_SD3	Data I/O line 3
52	QSPI_SCK	Flash clock signal
53	QSPI_SD0	Data I/O line 0
54	QSPI_SD2	Data I/O line 2
55	QSPI_SD1	Data I/O line 1
56	QSPI_SS_N	Chip select for the flash

Table 3 - RP2040 QSPI Interface with Flash Memory

- SPI0 is used to communicate with the FT800 graphics controller in single SPI mode. The maximum SPI clock can be 31.25MHZ. RP2040 will use SPI0 to communicate with FT800.

Pin	Signals	Description
4	SPI0_SCK	SPI Serial Clock
5	SPI0_MOSI	SPI serial data output to FT800.
6	SPI0_MISO	SPI serial data output from FT800
7	SPI0_CS#	Chip Select output, Active: LOW
8	EVE_INT#	Interrupt signal from FT800, Active: LOW
9	EVE_PD#	Reset signal to FT800, Active: LOW

Table 4 - SPI0 Interface with FT800

- The UART0 (PIN2, PIN3) is routed to CN2 for user access. It can be used to connect to external devices such as Bluetooth or Wi-Fi modules, among others.

- The UART1 (PIN11, PIN12) is routed to U3, an RS-485 transceiver, allowing the RP2040 to connect to external RS-485 networks and devices. UART1_DE (PIN39) is used for data transmit enable, while UART1_POL (PIN27) controls and swaps the RS-485 output polarity.
- The I2C1 port (PIN29, PIN30) is connected to CN3 for interfacing with external I2C devices.
- The SPI1 port (PIN13, PIN14, PIN15, PIN28, and PIN34) is used to initialize the LCD panel. These pins can also be configured as GPIO outputs and used with GPIO SPI to initialize the LCD.

Pin	Signals	Description
13	SPI1_SCK	SPI Serial Clock
14	SPI1_MOSI	SPI serial data output to LCD
15	SPI1_MISO	Not used
28	SPI1_CS#	Chip Select output, Active: LOW
34	LCD_RESET#	LCD Reset Signal, Active: LOW

Table 5 - SPI1 Interface with LCD

- PIN37 (GPIO25) of the RP2040 is used as an output pin to drive an LED for status indication.
- RP2040 has an integrated USB1.1 PHY and controller which can be used in both Device and Host mode. Two required 27Ω external resistors (R4 and R5) brings this interface to a standard micro-USB port. The USB port can be used to access the USB bootloader (BOOTSEL mode) stored in the RP2040 boot ROM.
- The rotary encoder's output pins SP1 and SP2 are connected to PIN35 and PIN36 of the RP2040, where they are configured as input pins.
- The rotary encoder's button output pin is connected to PIN32 of the RP2040, where it is configured as an input pin.

4.1.3 Touch Interface

4.1.3.1 FT800 with Resistive Touch Panel

- The FT800 typically uses Resistive touch, however in this module we have implemented a capacitive touch panel.

4.1.3.2 FT800 with Capacitive Panel

- The FT800 Embedded Video Engine (EVE) does not directly support capacitive touch panels; however, with additional hardware and proper firmware configuration, it can work with a capacitive touchscreen. Here's an overview of how to connect a capacitive touchscreen to the FT800 and set up the necessary hardware.
- The FT800 also uses PIN 19, 20,21,22 to interface with the capacitive touch panel, see Table 6.

Pin	Resistive Touch Signals	Capacitive Touch Signals	Description
19	X+	RST#	Reset signal for touch panel
20	Y+	INT#	Interrupt signal from touch panel
21	X-	SCL	I2C serial clock
22	Y-	SDA	I2C serial data

Table 6 - FT800 Capacitive Touch Interface

- PIN 19 (CTP_RST#) is used to reset the CTP controller, and it must be driven low for proper reset behaviour. A 100kΩ pull-down resistor (R21) is required to ensure that PIN 19 is pulled low during reset. Since PIN 19 is a low-drive strength pin, a buffer (U7) is used to increase its drive strength. This ensures that the reset signal is properly driven low, ensuring proper reset for the capacitive touch panel.
- The FT800's default firmware supports resistive touch, so to enable capacitive touch, the application must download the appropriate capacitive touch firmware into the FT800's RAM. Refer to [7.3](#) for the pseudo code to download capacitive touch firmware into FT800.

4.1.4 LCD Backlight

- IDM2040-21R LCD backlight uses 4 LEDs in parallel.
- The LCD backlight is driven by U6 (MIC2860-2D), which has a typical dropout of 52mV at 30.2mA per channel. This allows the LED to be powered directly from 3.3V. Pin 1 of U6 is connected to Pin 24 of the FT800, which is the LCD backlight control pin. This pin can output a PWM signal with an adjustable frequency and duty cycle.

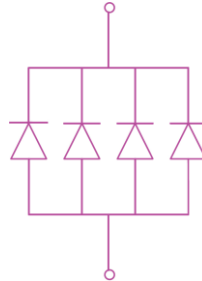


Figure 3 - LCD Backlight LED Connection

4.2 Connector Description

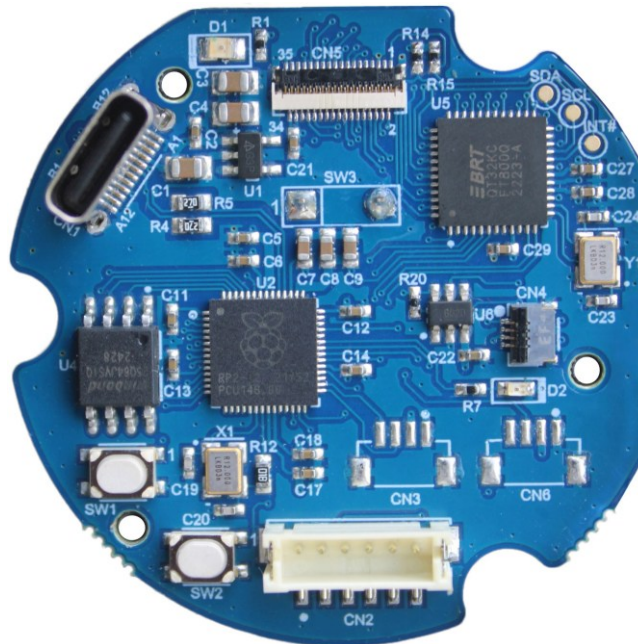


Figure 4 - IDM2040-21R PCB LAYOUT

4.2.1 CN1

CN1 is a Type-C USB connector used to provide +5V to the board and download firmware to the flash.

4.2.2 CN2

CN2 is an RS-485 output and UART output connector, via a 1.5mm pitch, 6-pin connector. See Table 7 for details. It is used to connect to an external RS-485 network.

Pin	Name	Type	Description
1	VCC5V	P	+5V
2	RS_485 terminal A/Y	I/O	RS_485 terminal A/Y
3	RS_485 terminal B/Z	I/O	RS_485 terminal B/Z
4	UART0_TX	O	UART0 transmit data line
5	UART0_RX	I	UART0 receive data line
6	GND	P	Ground

Table 7 - RS485 Output

4.2.3 CN3

CN3 is the I2C1 output connector of the RP2040, used to connect peripheral I2C devices. CN3 is not mounted on PCB and is optional, the part no. is [BM04B-SRSS-TB](#).

Pin	Name	Type	Description
1	GND	P	Ground
2	VCC3V3	P	DC +3.3V output
3	I2C1_SDA	I/O	I2C1 serial data
4	I2C1_SCL	O	I2C1 serial clock

Table 8 - I2C Output

4.2.4 CN4

CN4 is the external rotary encoder input.

Pin	Name	Type	Description
1	SP1	I	SP1, rotary encoder input
2	GND	P	Ground
3	SP2	I	SP2, rotary encoder input
4	NC	-	NC

Table 9 - Rotary Encoder Input

4.2.5 CN5

CN5 is an FPC connector for connecting an external LCD. It has bottom contacts.

Pin	Name	Type	Description
1	INT#	I	Touch Panel Interrupt signal, ACTIVE: LOW
2	SDA	I/O	Touch Panel I2C SDA signal
3	SCL	O	Touch Panel I2C Clock signal
4	CTP_RST#	O	Touch Panel rest signal
5	GND	P	Ground
6	RGB Signal: R5	O	RGB data bus signal: Red data 5
7	RGB Signal: R4	O	RGB data bus signal: Red data 4
8	RGB Signal: R3	O	RGB data bus signal: Red data 3
9	RGB Signal: R2	O	RGB data bus signal: Red data 2
10	RGB Signal: R1	O	RGB data bus signal: Red data 1
11	RGB Signal: R0	O	RGB data bus signal: Red data 0
12	RGB Signal: G5	O	RGB data bus signal: Green data 5
13	RGB Signal: G4	O	RGB data bus signal: Green data 4
14	RGB Signal: G3	O	RGB data bus signal: Green data 3
15	RGB Signal: G2	O	RGB data bus signal: Green data 2
16	RGB Signal: G1	O	RGB data bus signal: Green data 1
17	RGB Signal: G0	O	RGB data bus signal: Green data 0
18	RGB Signal: B5	O	RGB data bus signal: Blue data 5
19	RGB Signal: B4	O	RGB data bus signal: Blue data 4
20	RGB Signal: B3	O	RGB data bus signal: Blue data 3
21	RGB Signal: B2	O	RGB data bus signal: Blue data 2
22	RGB Signal: B1	O	RGB data bus signal: Blue data 1
23	RGB Signal: B0	O	RGB data bus signal: Blue data 0
24	HSYNC	O	RGB line synchronizing signal
25	VSYNC	O	RGB frame synchronizing signal
26	DE	O	RGB data enable signal
27	PCLK	O	RGB pixel clock signal
28	SPI1_CS#	O	SPI Chip select signal, Active Low
29	SPI1_SCK	O	SPI Clock signal
30	SPI1_MOSI	O	SPI Data signal
31	LCD_RESET#	O	LCD Reset Signal, Active Low
32	VCC	P	Power supply. +3.3V
33	LEDK	P	LED CATHODE

34	LEDA	P	LED ANODE
35	GND	P	Ground
36	GND	P	Ground
37	GND	P	Ground

Table 10 - LCD Connector

4.2.6 CN6

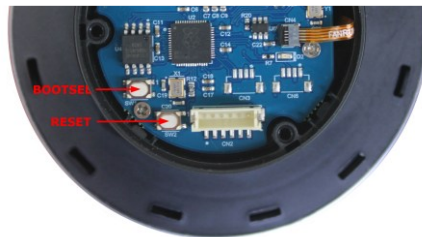
CN6 is the audio output connector of FT800. CN6 is not mounted on PCB and is optional, the part no. is [BM04B-SRSS-TB](#).

Pin	Name	Type	Description
1	GND	P	Ground
2	VCC3V3	P	DC +3.3V output
3	Audio_L	O	Audio output
4	NC	-	No connection

Table 11 - Audio Output

4.2.7 SW1

SW1 is the BOOTSEL button, used to select the boot mode from USB or flash. Press and Hold SW1 whilst powering up/resetting to enter boot mode.


Figure 5 - BOOTSEL and RESET Button

4.2.8 SW2

SW2 is the reset button for RP2040.

4.2.9 SW3

SW3 is the push button of the rotary encoder input.

5 Graphical User Interface

The IDM2040-21R features four sets of menus for simulating Aircon control, Lighting control, Floor heating control, and Curtain control. Users can interact with the system through the touch panel, rotary encoder, and push button, ensuring an enhanced human-machine interface experience.

5.1 Aircon Control

Touch the icon to access the menu. To return to the previous menu, touch the return icon or press the button.

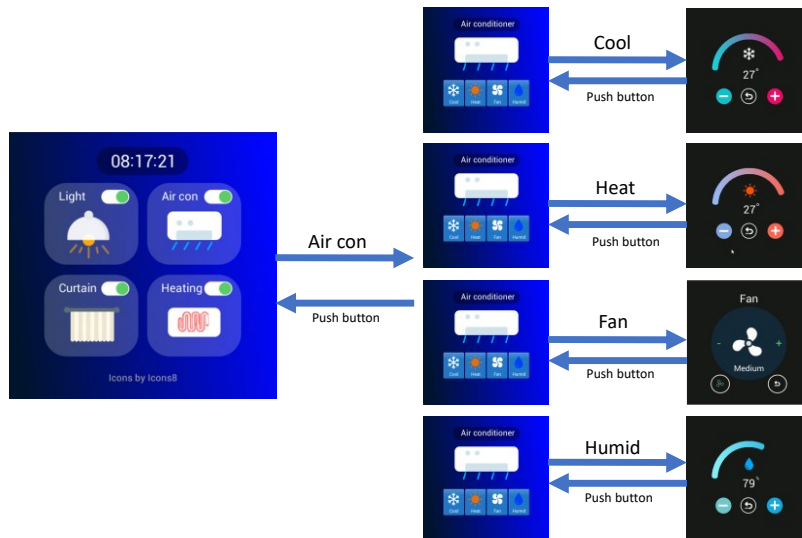


Figure 6 - Aircon Control Menu

5.2 Lighting Control

Touch the icon to access the menu. To return to the previous menu, touch the return icon or press the button.

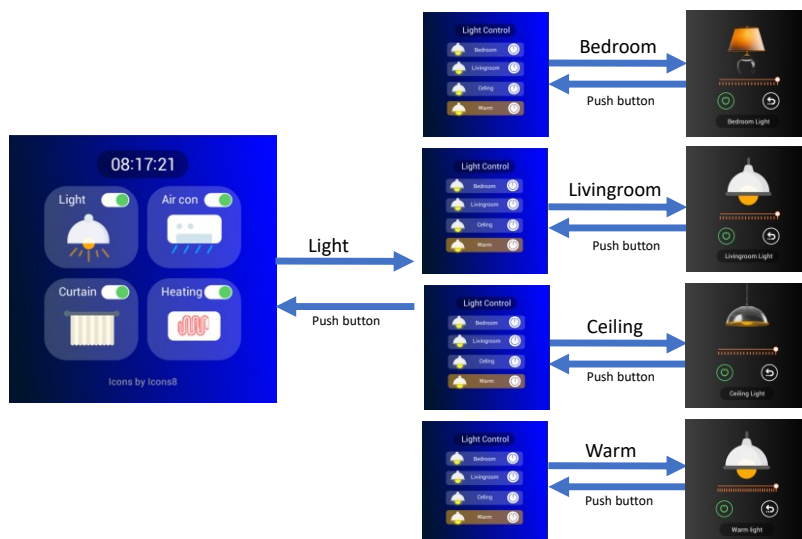


Figure 7 - Lighting Control Menu

5.3 Floor Heating Control

Touch the icon to access the menu. To return to the previous menu, touch the return icon or press the button.

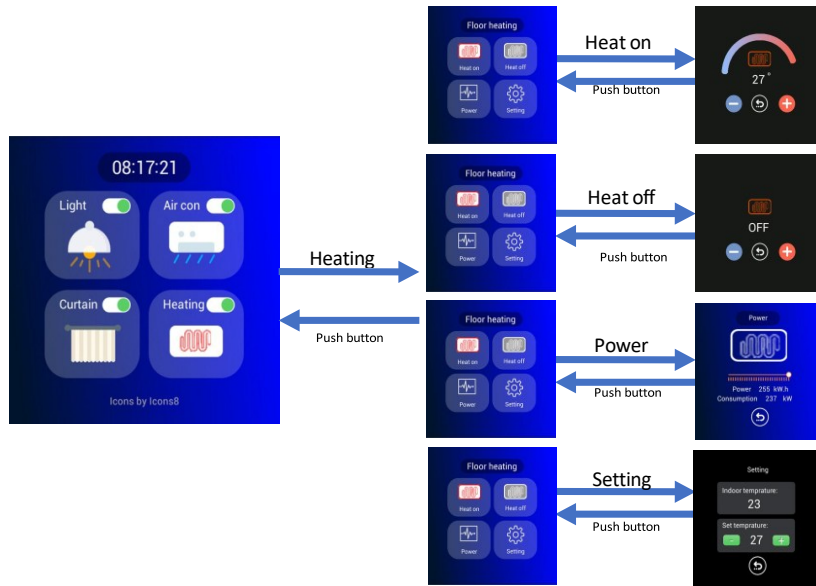


Figure 8 - Floor Control Menu

5.4 Curtain Control

Touch the icon to access the menu. To return to the previous menu, touch the return icon or press the button.

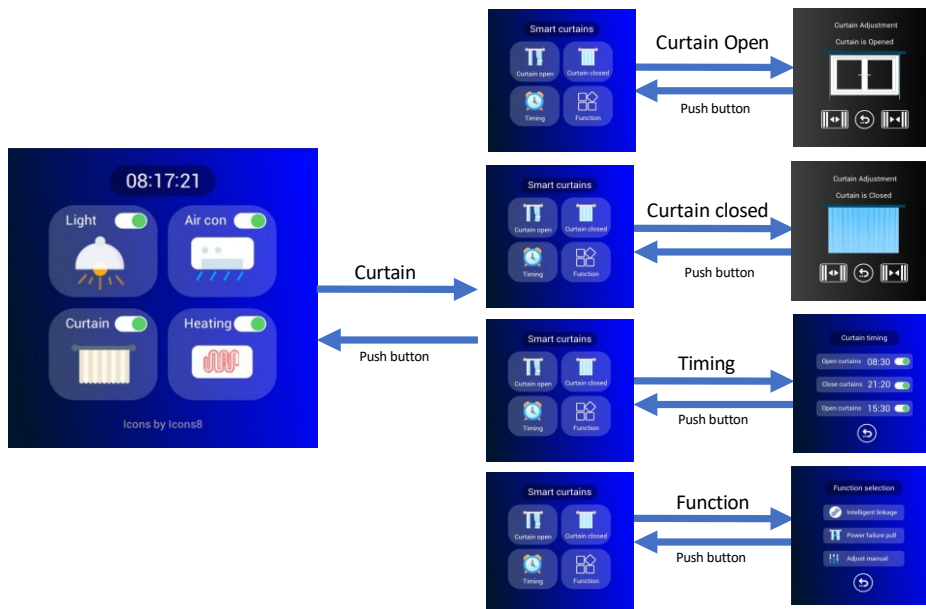


Figure 9 - Curtain Control Menu

6 Software Development

The RP2040 microcontroller can be programmed using C/C++, [MicroPython](#), or [CircuitPython](#).

6.1 C/C++ Environment Installation

- Download PICO C/C++ environment installation tools, `pico-setup-windows-x64-standalone.exe` from [here](#).
- Double-click `pico-setup-windows-x64-standalone.exe` to run the installer. Click "Next" to complete the installation process.
- Download and install [EVE Screen Designer](#).
- Use [EVE Screen Designer](#) to develop the code.

6.2 MicroPython Environment Installation

- Download the MicroPython UF2 file from [MicroPython](#).
- Press and hold the BOOTSEL button (SW1) on IDM2040-21R, then connect it to your computer using a USB cable.
- Release the BOOTSEL button once the RPI-RP2 drive appears on your computer.
- Drag and drop the UF2 file onto the RPI-RP2 drive. The RP2040 will reboot and start running MicroPython.
- Download and install [Thonny](#) on your computer.
- Connect the IDM2040-21R to your computer. In Thonny, navigate to Tools > Options and select the "Interpreter" tab. From the drop-down list, choose MicroPython (Raspberry Pi Pico).
- Select the port labelled "USB Serial Device (COMX)" and use MicroPython with Thonny to develop the application code.

6.3 CircuitPython Environment Installation

- Download the CircuitPython UF2 file from [CircuitPython](#).
- Press and hold the BOOTSEL button (SW1) on IDM2040-21R, then connect it to your computer using a USB cable.
- Release the BOOTSEL button once the RPI-RP2 drive appears on your computer.
- Drag and drop the UF2 file onto the RPI-RP2 drive. The RP2040 will reboot and start running CircuitPython.
- Download and install Thonny or [Mu](#) on your computer. It is recommended to install the [Mu](#) editor for CircuitPython applications.
- Connect the IDM2040-21R to your computer and run Mu. Select RP2040, and Mu with CircuitPython will be ready to use.
- Use CircuitPython with Thony or Mu Editor to develop the code.

7 Firmware Update

7.1 MCU Firmware Update

- Press and hold the BOOTSEL button (SW1) on IDM2040-21R, then connect it to your computer using a USB cable.
- An RPI-RP2 drive will appear on the PC.
- Drag and drop the firmware.UF2 file onto the RPI-RP2 drive. The drive will then disappear, and the firmware will be programmed into the FLASH of the RP2040.
- The system will reboot and begin running the updated firmware.
- When the IDM2040-21R is connected to the PC, press and hold the BOOTSEL button (SW1), then press the RESET button (SW2). The RPI-RP2 drive will appear.

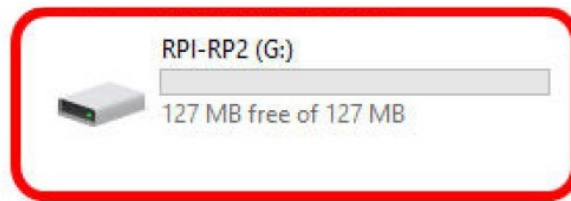


Figure 10 - RPI-RP2 Drive

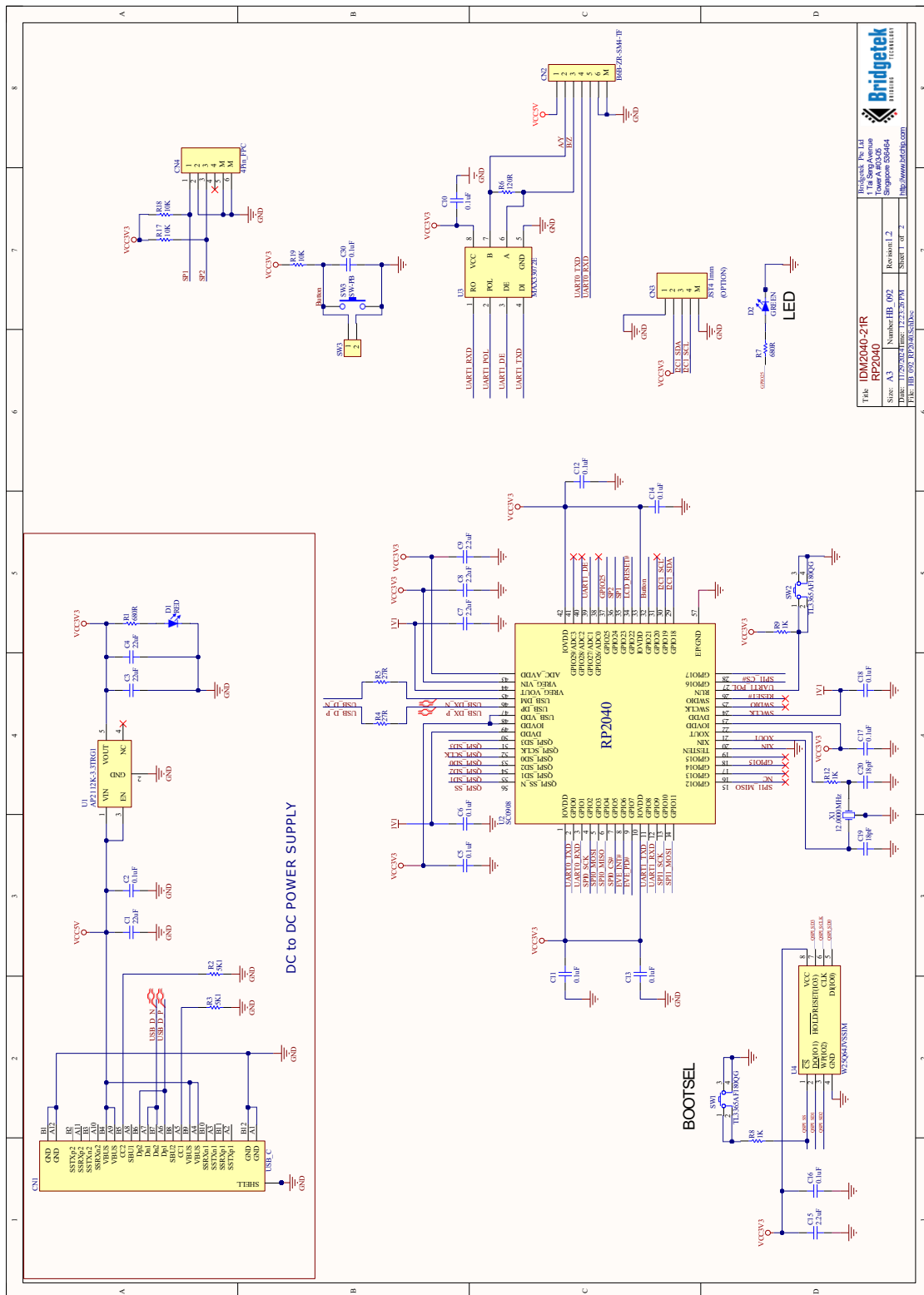
7.2 C Code for LCD Initialization

The LCD of the IDM2040-21R must be initialized using a series of SPI commands. The source code refers to [Bridgetek Github](#).

7.3 Upload Capacitive Touch Firmware to FT800

After the FT800 has been initialised to the active state, the Host MCU should read and check REG_CPURESET is zero to make sure FT800 is ready, then it can upload capacitive touch firmware to the FT800. For the source code, refers to [Bridgetek Github](#).

8 Schematic Diagram



File: IDM2040-21R

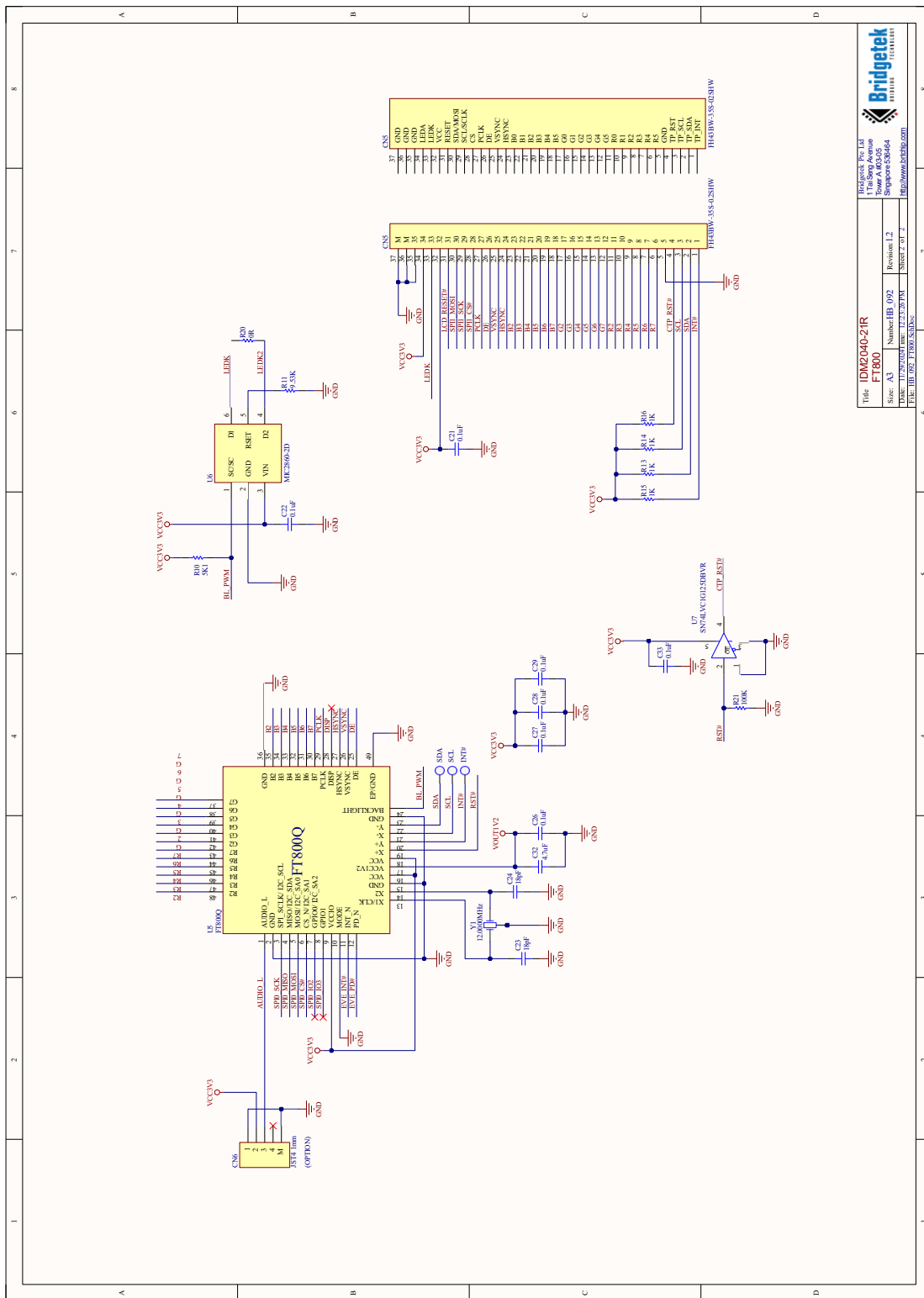
 RP2040

 Size: A3 Number: HB 002 Revision: 1.2

 Date: 11/09/2014 File: T223231.PDF Sheet 1 of 2

 URL: http://www.bridgetek.com

Figure 11 - RP2040 Schematic



Title: IDM2040-21R	
Size: A3	Number: HB_102
Drawn: U29702/2017/03/17/03/17/03/17	Revision: 1.2
File: HB_102_170303.SCH	Sheet: 2 of 2
Bridgetek Pte Ltd 17, Lebong Avenue Singapore 534644 www.bridgetek.com	

Figure 12 - FT800 Schematic

9 Hardware Parameters

Display Parameters	Parameters	Data	Description
	Display Size	Φ53.28 mm	-
	Resolution	480× 480	-
	View Angle	IPS	Typical 80°/80°/80°/80° (L/R/U/D)
	Brightness	300 cd/m ²	-

Table 12 - Display parameters

Parameters		Test Condition		Min	Typical	Max	Unit
Electrical Parameters	Working Voltage	-	-	-	5.0	-	V
	Working Current	VCC=+5V	Backlight, Full Brightness	-	237	-	mA
Backlight Off			-	63	-	mA	
Reliability	Working Temperature	5V, Humidity 60%		-20	25	70	°C
	Storage Temperature	-		-30	25	80	°C
	Working Humidity	-		10%	60%	90%	RH
Interface	RS-485 Baud Rate	-		1200	115200	-	bps
	USB Port	Type C					

Table 13 - Other Parameters

10 Mechanical Information

10.1 Mechanical Drawing

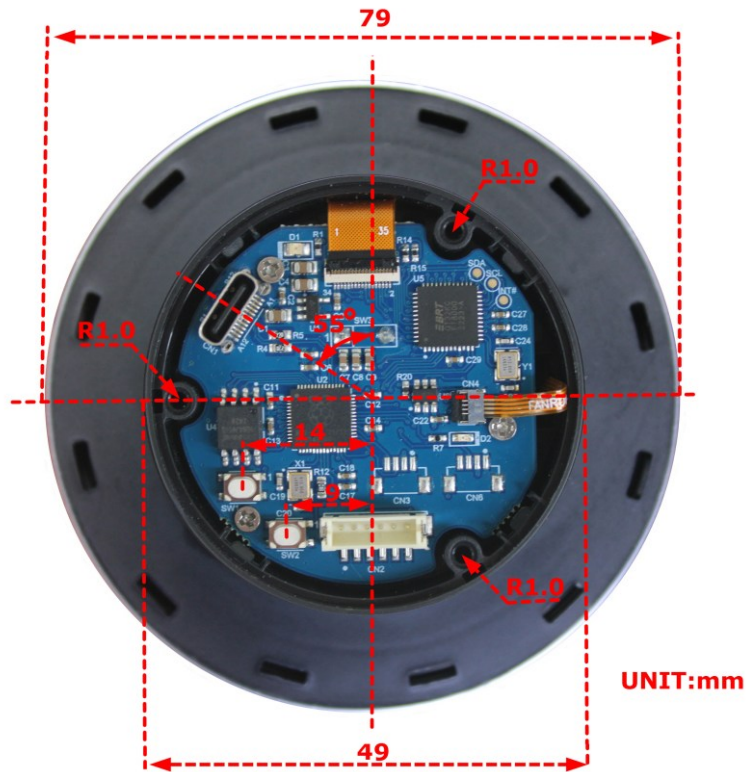


Figure 13 - Mechanical Dimension (Back View)

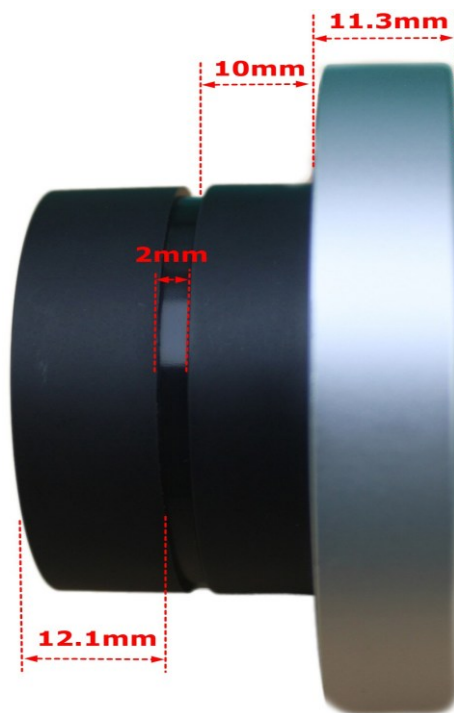


Figure 14 - Mechanical Dimension (Side View)

10.2 PCB Dimension

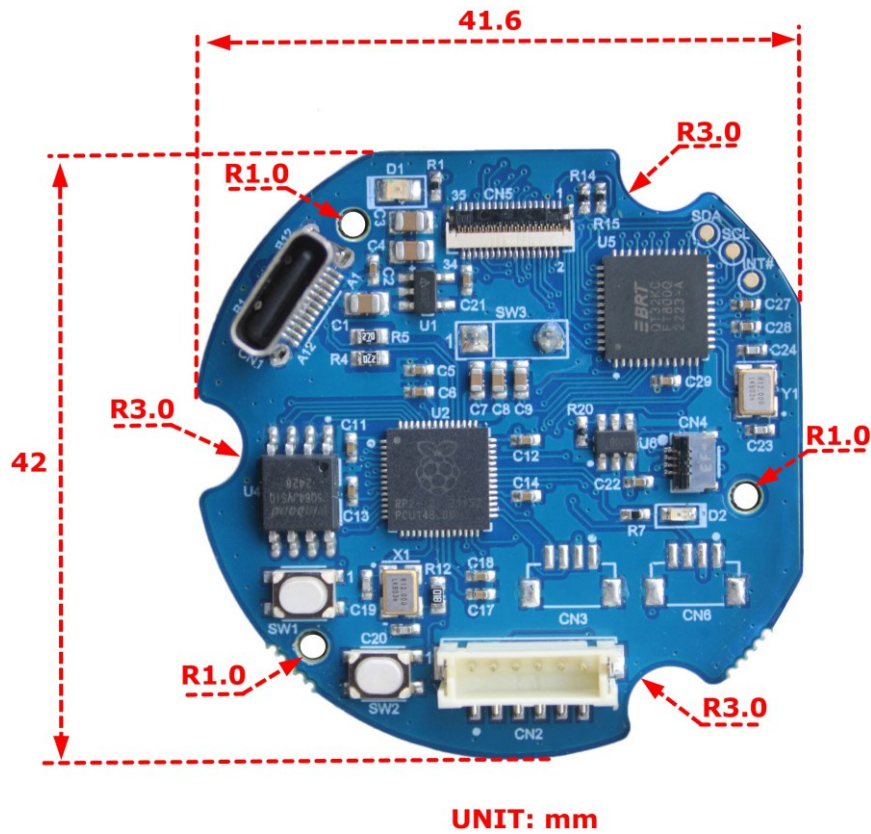


Figure 15 - PCB Dimension

11 Disclaimer Notice: Use of Third-Party Software or Websites

We may recommend use of software or web sites that are owned or operated by other companies. We offer or facilitate this recommendation by hyperlinks or other methods to aid your access to the third-party resource. While we endeavour to direct you to helpful, trustworthy resources, we cannot endorse, approve, or guarantee software, information, products, or services provided by or at a third-party resource or track changes in the resource. Thus, we are not responsible for the content or accuracy of any third-party resource or for any loss or damage of any sort resulting from the use of, or for any failure of, products or services provided at or from a third-party resource.

We recommend these resources on an "as is" basis. When you use a third-party resource, you will be subject to its terms and licenses and no longer be protected by our privacy policy or security practices, which may differ from the third part policy or practices or other terms. You should familiarize yourself with any license or use terms of, and the privacy policy and security practices of, the third-party resource, which will govern your use of that resource.

12 Warranty Statement

According to our after-sales policy, the warranty (if applicable) will be void under the following circumstances:

- The device has been damaged due to human factors, such as dropping, impact, water exposure, or unauthorized disassembly/modification.
- The device has malfunctioned due to improper use, mishandling, or usage beyond its intended design.
- The device has been disassembled, repaired, or modified by unauthorized personnel.
- Any other conditions that do not comply with our warranty policy.

13 Contact Information

Refer to <https://brtchip.com/contact-us/> for contact information.

Distributor and Sales Representatives

Please visit the Distribution Network – IC & Module (brtchip.com) page for the contact details of our distributor(s) and sales representative(s) in your country.

System and equipment manufacturers and designers are responsible to ensure that their systems, and any Bridgetek Pte Ltd (BRT Chip) devices incorporated in their systems, meet all applicable safety, regulatory and system-level performance requirements. All application-related information in this document (including application descriptions, suggested Bridgetek devices and other materials) is provided for reference only. While Bridgetek has taken care to assure it is accurate, this information is subject to customer confirmation, and Bridgetek disclaims all liability for system designs and for any applications assistance provided by Bridgetek. Use of Bridgetek devices in life support and/or safety applications is entirely at the user's risk, and the user agrees to defend, indemnify, and hold harmless Bridgetek from any and all damages, claims, suits, or expense resulting from such use. This document is subject to change without notice. No freedom to use patents or other intellectual property rights is implied by the publication of this document. Neither the whole nor any part of the information contained in, or the product described in this document, may be adapted, or reproduced in any material or electronic form without the prior written consent of the copyright holder. Bridgetek Pte Ltd, 1 Tai Seng Avenue, Tower A, #03-05, Singapore 536464. Singapore Registered Company Number: 201542387H.

Appendix A – References

Document References

[FT800 Embedded Video Engine Datasheet](#)

[FT800 Series Programmer Guide](#)

[EVE Toolchains](#)

[RP2040 Datasheet](#)

Acronyms and Abbreviations

Terms	Description
EVE	Embedded Video Engine
GPIO	General Purpose Input Output
I2C	Inter-Integrated Circuit
LCD	Liquid-Crystal Display
LED	Light Emitting Diode
MCU	Microcontroller Unit
PCB	Printed Circuit Board
PWM	Pulse-Width Modulation
QSPI	Quad Serial Peripheral Interface
RGB	Red, Green, Blue
SPI	Serial Peripheral Interface
SRAM	Static random-access memory
TFT	Thin Film Transistor
UART	Universal Asynchronous Receiver / Transmitter
USB	Universal Serial Bus
CTP	Capacitive Touch Panel
RGB666	RGB666 refers to a 6-bit per channel RGB color format, meaning each of the red, green, and blue channels has 6 bits of data. This results in a total of 18 bits per pixel (6R + 6G + 6B = 18-bit color depth).

Appendix B – List of Figures and Tables

List of Figures

Figure 1 - IDM2040-21R Block Diagram.....	4
Figure 2 - IDM2040-21R Front and Back View	4
Figure 3 - LCD Backlight LED Connection	9
Figure 4 - IDM2040-21R PCB LAYOUT	9
Figure 5 - BOOTSEL and RESET Button.....	11
Figure 6 - Aircon Control Menu	12
Figure 7 - Lighting Control Menu.....	12
Figure 8 - Floor Control Menu	13
Figure 9 - Curtain Control Menu.....	13
Figure 10 - RPI-RP2 Drive.....	15
Figure 11 - RP2040 Schematic.....	16
Figure 12 - FT800 Schematic.....	17
Figure 13 - Mechanical Dimension (Back View)	19
Figure 14 - Mechanical Dimension (Side View).....	19
Figure 15 - PCB Dimension	20

List of Tables

Table 1 - Part Number/Ordering Information	3
Table 2 - Package Content	3
Table 3 - RP2040 QSPI Interface with Flash Memory	7
Table 4 - SPI0 Interface with FT800	7
Table 5 - SPI1 Interface with LCD	8
Table 6 - FT800 Capacitive Touch Interface.....	8
Table 7 - RS485 Output.....	9
Table 8 - I2C Output	10
Table 9 - Rotary Encoder Input.....	10
Table 10 - LCD Connector	11
Table 11 - Audio Output	11
Table 12 - Display parameters.....	18
Table 13 - Other Parameters	18

Appendix C – Revision History

Document Title: IDM2040-21R Datasheet
Document Reference No.: BRT_000444
Clearance No.: BRT#217
Product Page: <https://brtchip.com/product/idm2040-21r/>
Document Feedback: [Send Feedback](#)

Revision	Changes	Date
1.0	Initial Release	15-01-2025
1.1	Added option comments for CN3, CN6 and schematic (Fig.11, Fig.12); Table 9 description updated	20-03-2025