



PanL 35

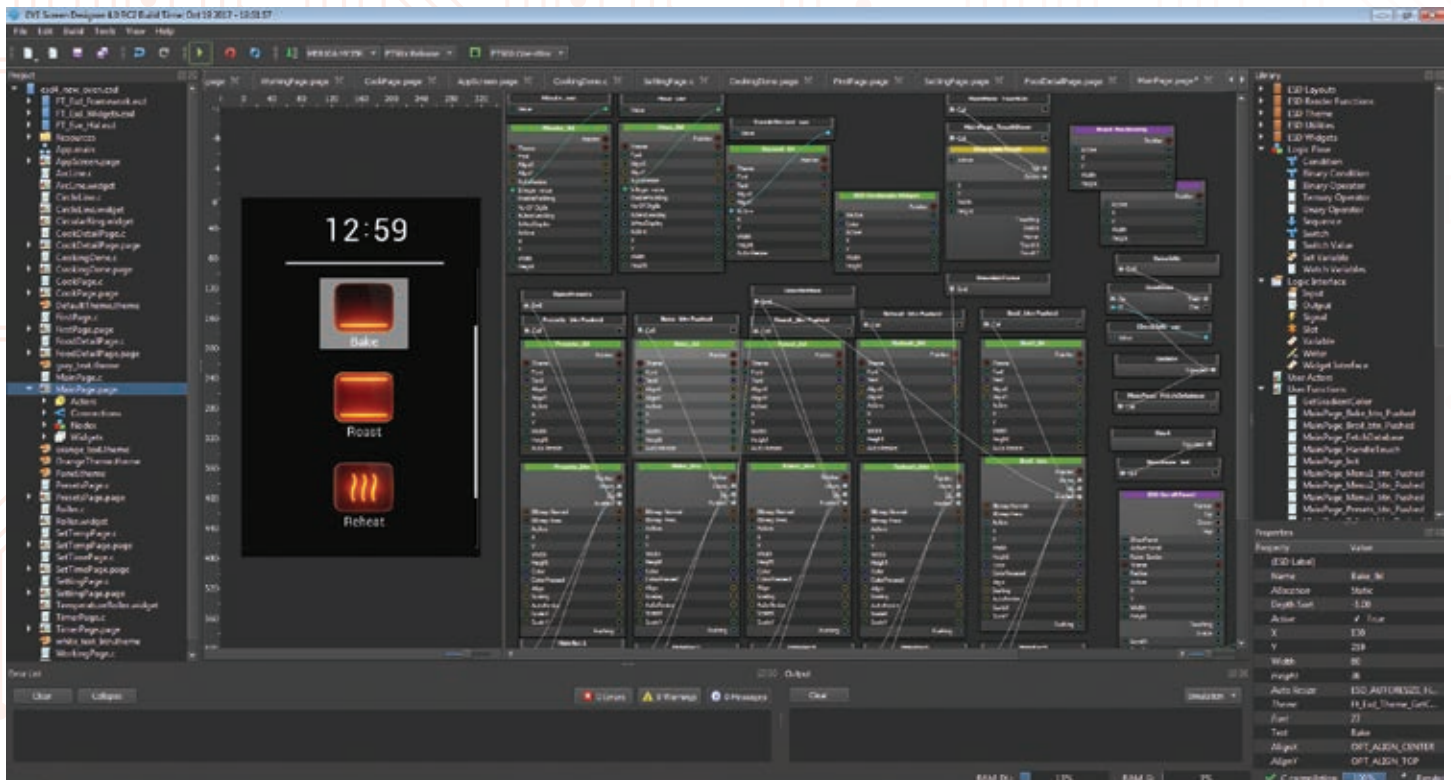


PanL 70



PanL 70 PLUS

PanL displays such as the PanL 35, PanL 70 and PanL 70 PLUS offer access to a feature rich, full colour TFT display with touch control, audio and optical (LED) feedback. These smart displays are ideally suited for Human Machine Interface applications such as those found in modern smart white goods appliances. They are available with and without the enclosure. They may be used in standalone fashion, or connected to external controllers or fully expanded with PanL HUBs.



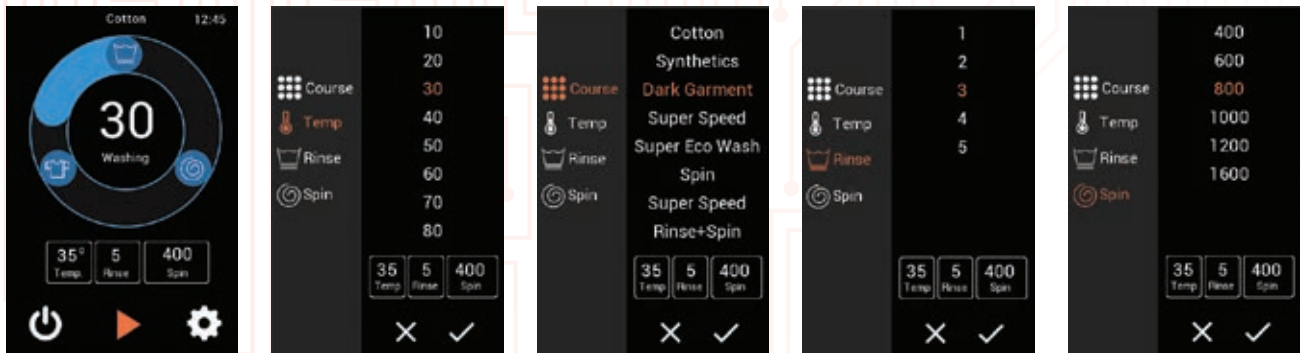
EVE Screen Designer

PanL displays are brought to life by intuitive GUIs developed using the EVE Screen Designer (ESD). Bridgetek's ESD is a fourth generation toolchain that offers a one-stop development environment supporting the visual design paradigm. ESD incorporates the PanL board support package (PanL BSP) and is capable of directly targeting PanL 35 and PanL 70 displays. By focusing on WYSIWYG development, it enhances GUI developer productivity. Smart widgets, animations, page transitions, user touch inputs are all connected via feature rich flow charting controls and the built-in code generator and simulator enable quick debug iterations which significantly reduce developer effort. Additional application logic may be added to fine tune the end result.

Oven Control



Washing Machine Control



Fridge Control

