

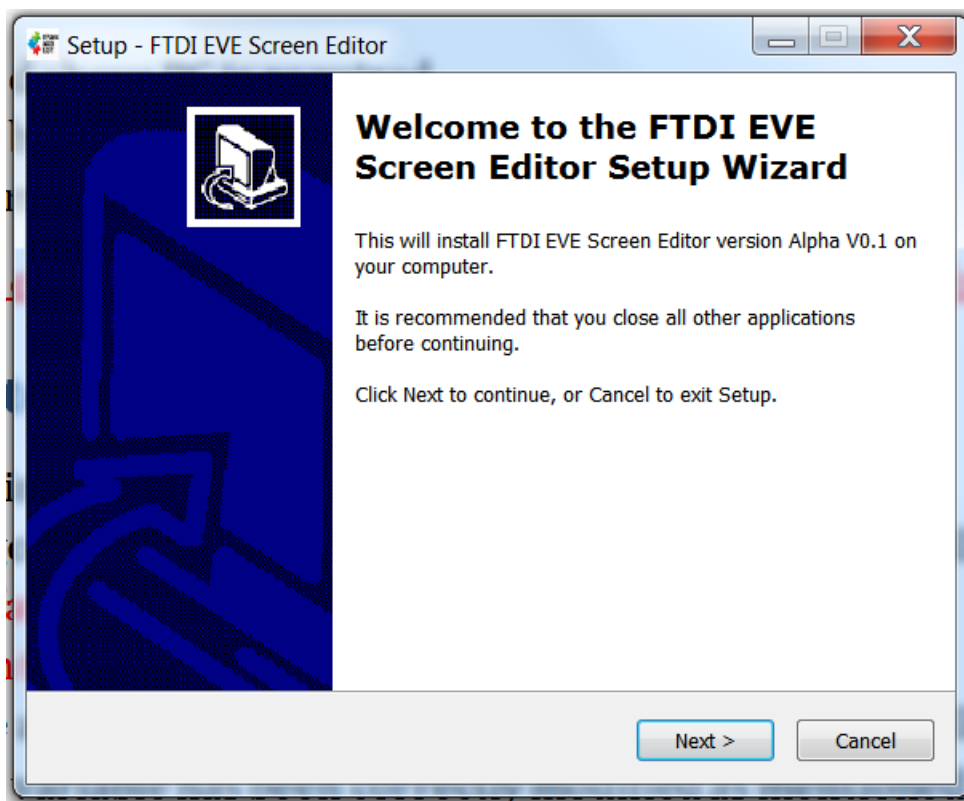
FTDI EVE Screen Editor(Alpha) Installation Guide

Prerequisite

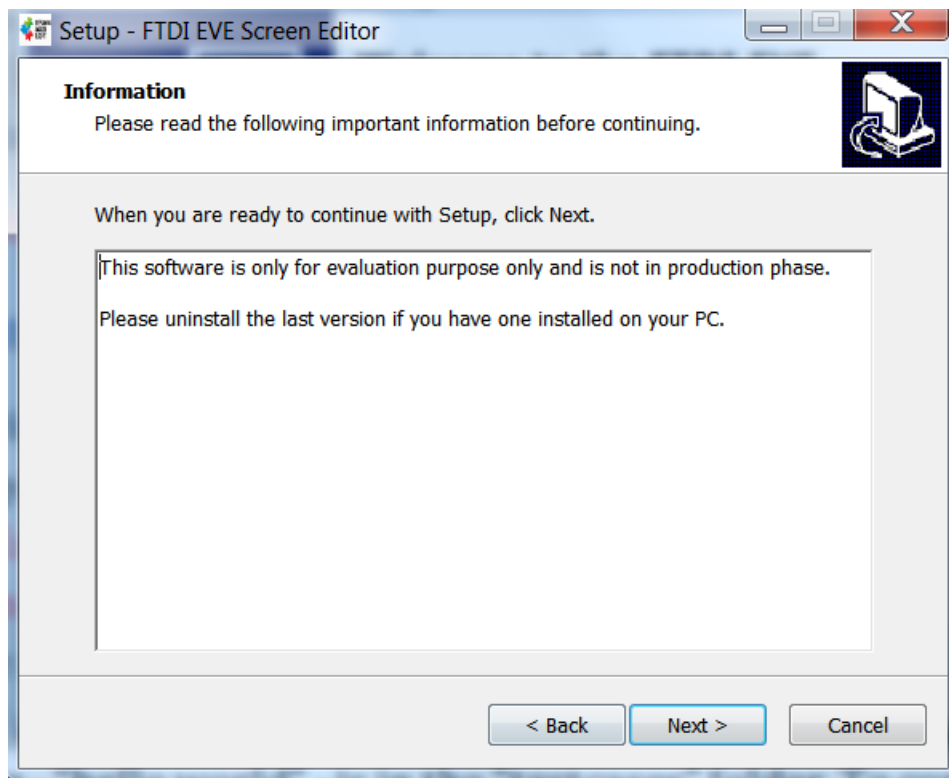
1. Windows 7 and above PC is required
2. At least 60M bytes free disk space
3. User needs administrator privilege to run this setup package

Installation steps

1. Double click the installation package “FTDI EVE Screen Editor.exe”, the setup wizard will be launched.

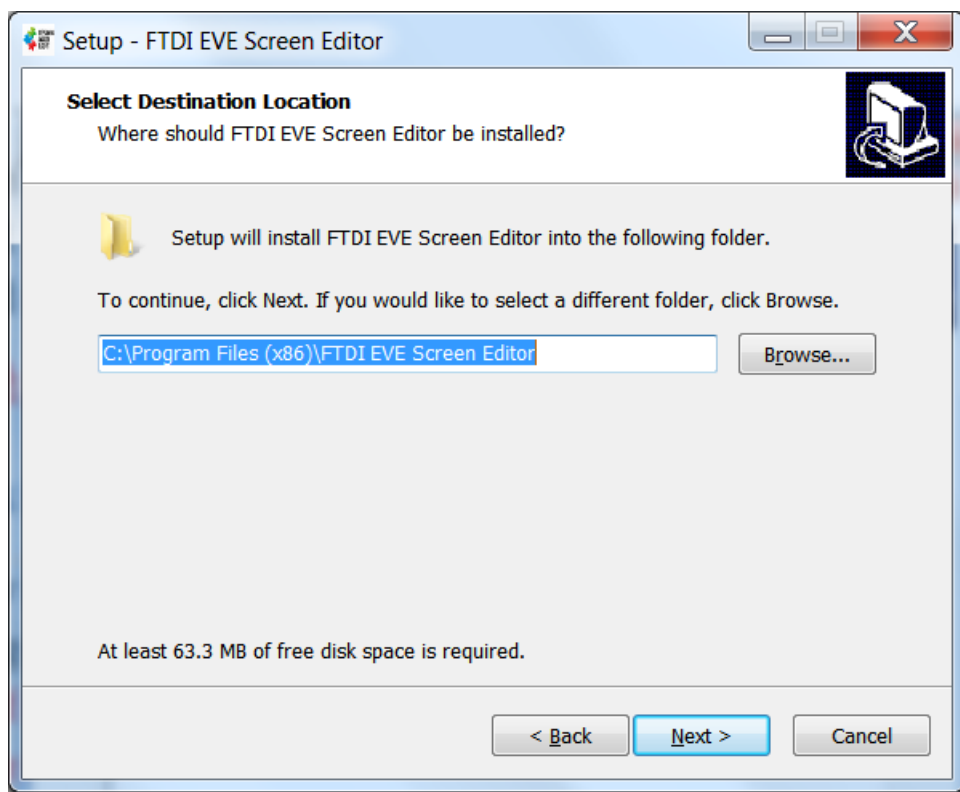


2. Click Next button, the information dialogue will show and user shall read it carefully.

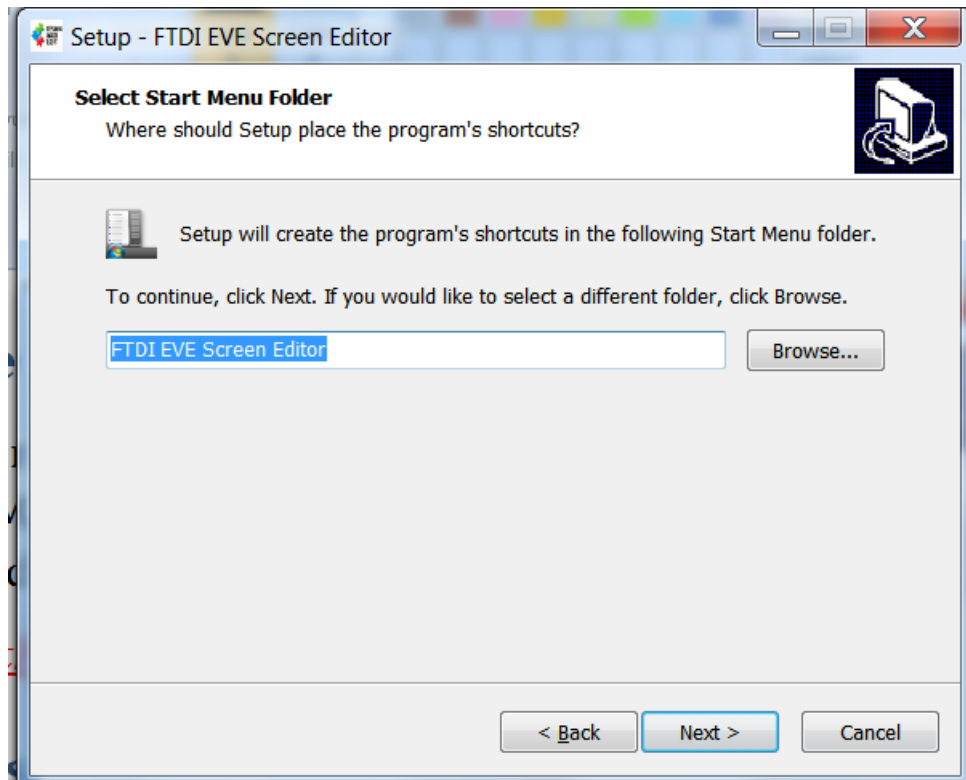


3. Click Next button, user can specify the installation path here.

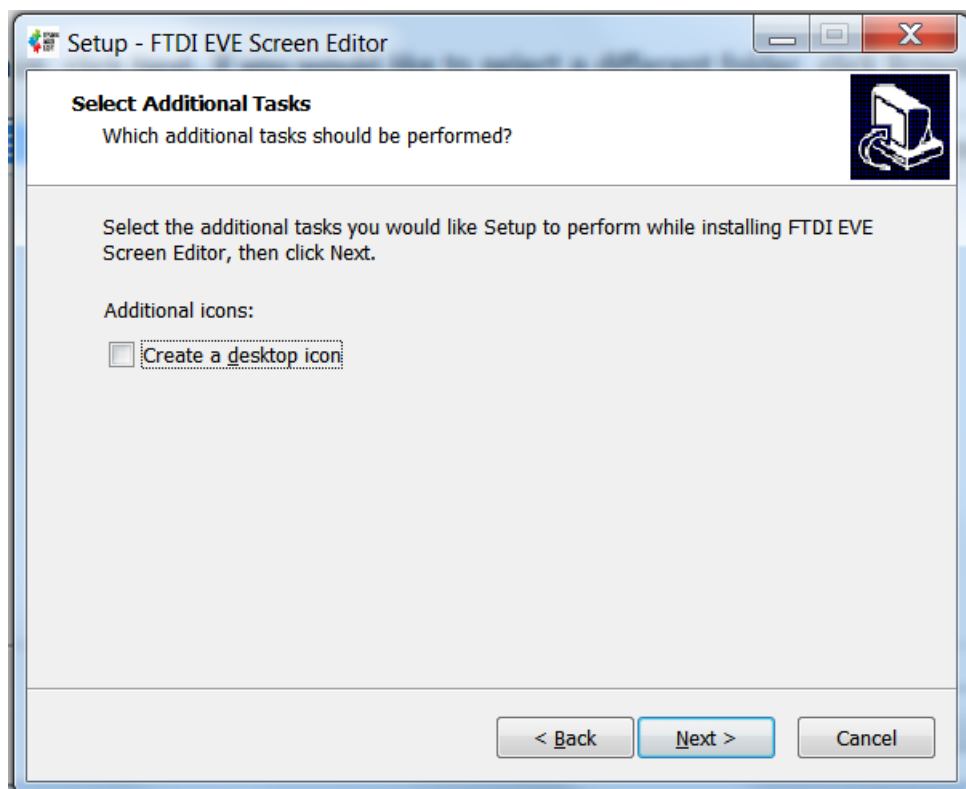
Note: Please make sure the installation path is able to be fully controlled by the user who run the installed application .



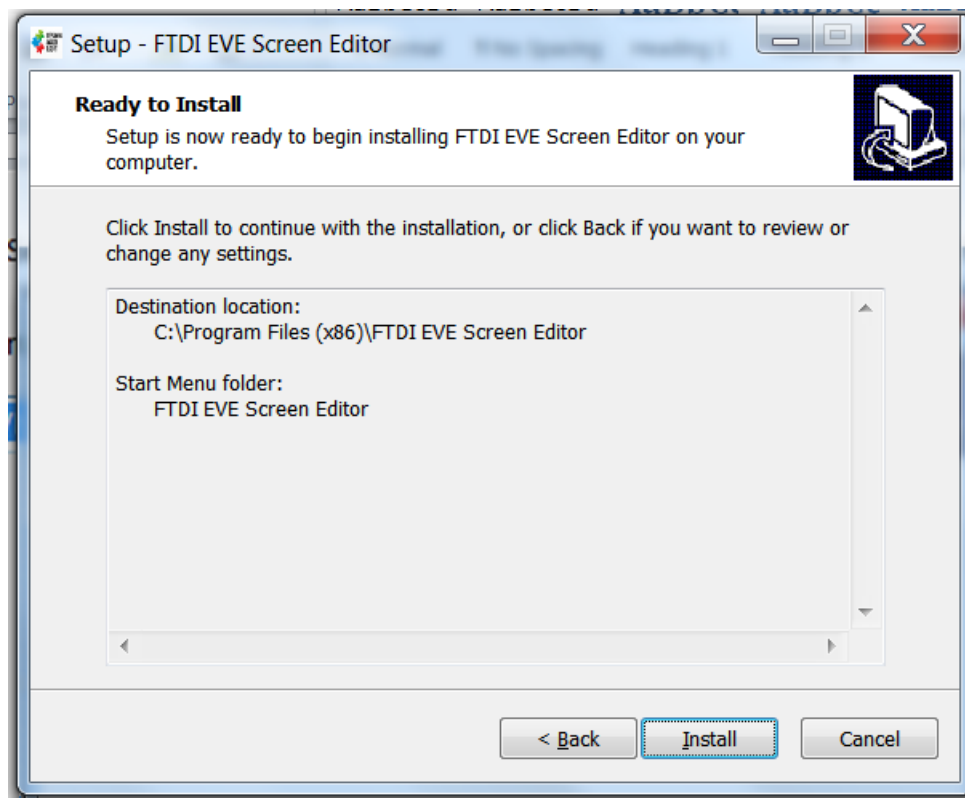
4. Click Next button, user can select the start menu folder for the application.



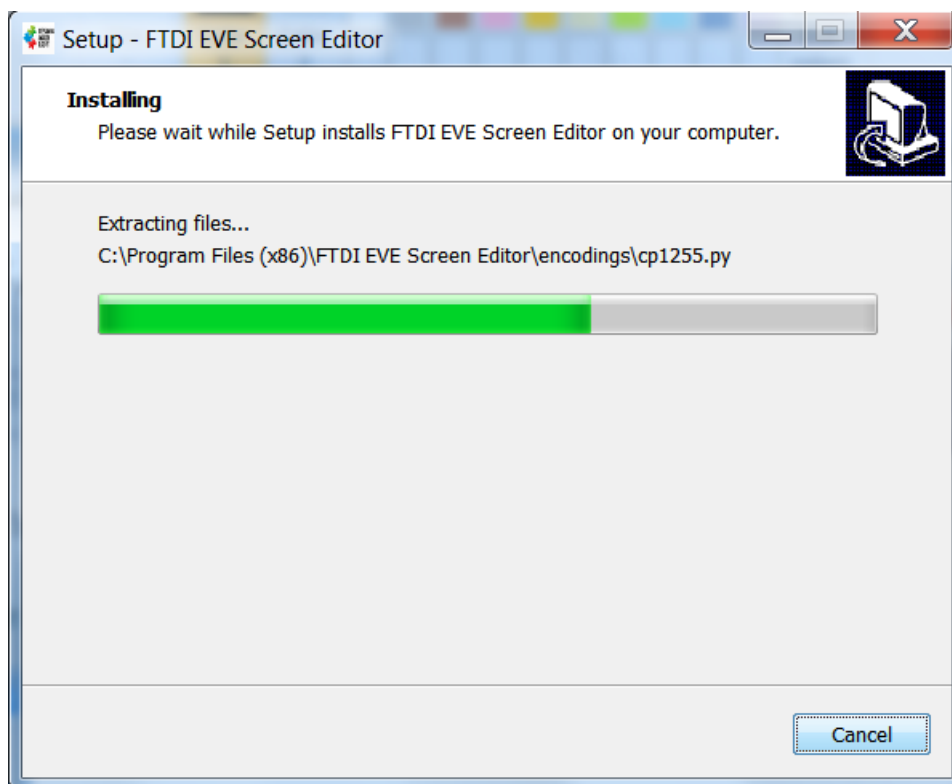
5. Click Next button, user may select to create a desktop icon here.



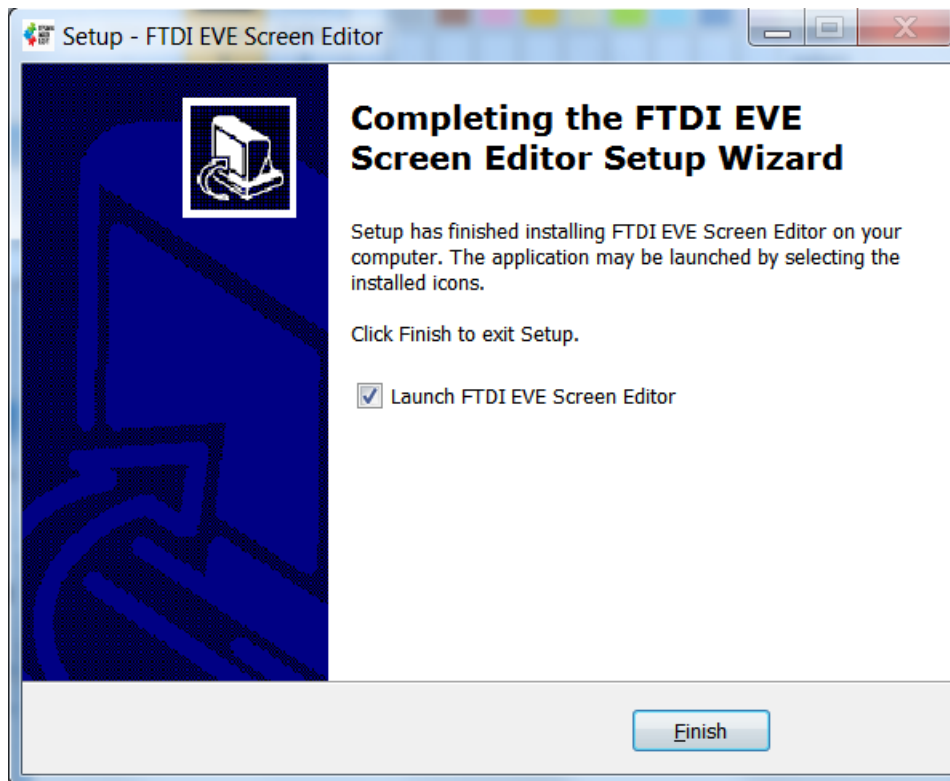
6. Click Next button, user have a summary of user's selections shown here



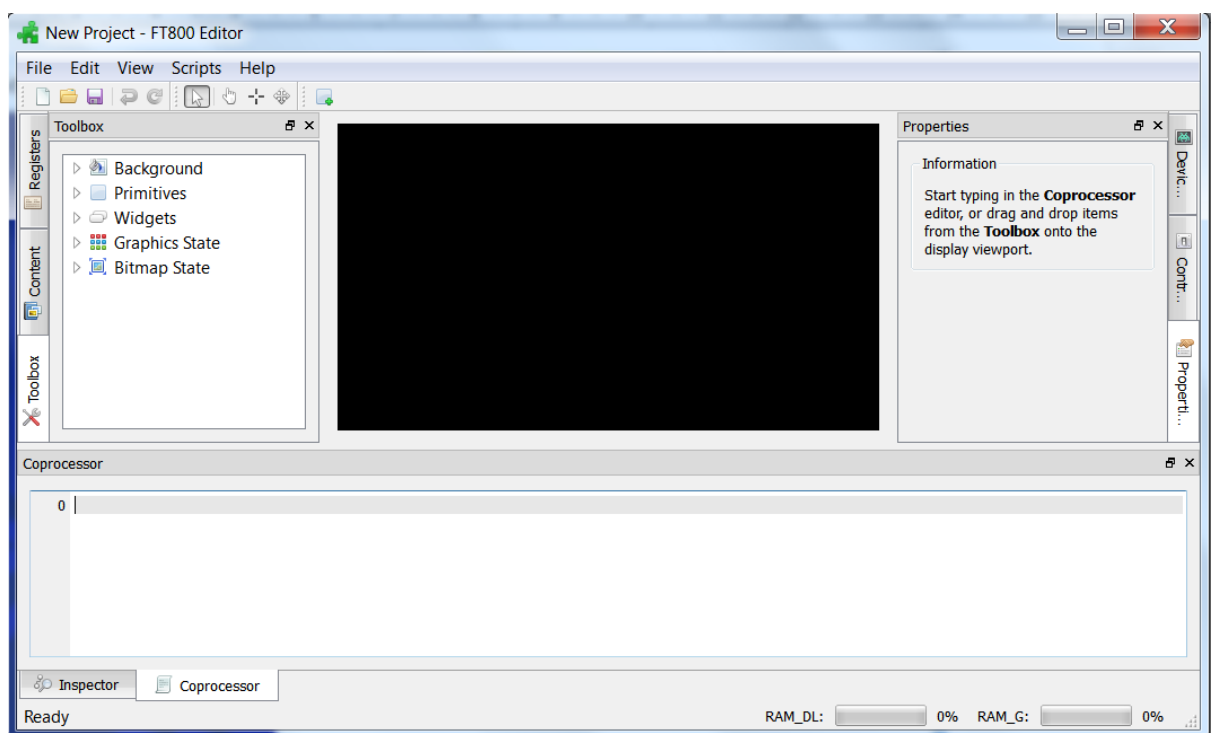
7. Click Next button, installation is started!



8. Wait till the progress bar is reached and will see:



9. Click Finish, if the checkbox "Launch FTDI EVE Screen Editor" is not cleared, the application will be launched automatically as below:



10. Congrates! Done!